



PHOENIX IMPEX



ABOUT US

- **PHOENIX IMPEX** is a diversified sheet metal manufacturing company focused on Electrical Panels, DB Boxes, Sheet Metal Enclosures.
- Since our founding in 2015, our mission has been to produce quality product and achieve this at lowest cost. Today this cornerstone principle continues to guide and drive all of our business decisions.
- The founder are rooted in our deep tradition of manufacturing sheet metal stampings, fabrications and sheet metal related solutions and has a vast physical and practical experience to make tools, dies and fixtures.
- Our commitment to quality, competitive pricing, innovative inventory programs, customer service and on time delivery makes us a one stop source for your needs.

CAPABILITIES

- **CNC PUNCHING**
- **CNC BENDING**
- **PRESS SHOP
(10 TONNES TO 100 TONNES)**
- **IN-HOUSE TOOL ROOM**
- **PROTOTYPE DESIGNING**
- **SPOT WELDING & CO2 WELDING**
- **ALL KINDS OF SURFACE TREATMENTS
(ROHS COMPLIANT)**



INDUSTRIES WE CATER

- **INFRASTRUCTURE**
- **MEDICAL INSTRUMENTS**
- **LIGHTING INDUSTRIES**
- **TELECOM** ● **OIL & GAS** ● **DEFENSE**

ELECTRICAL PANELS



- Range : (W X H X D mm) : 200 X 200 X 100 upto 1600 X 1200 X 300

- Fabricated using CRCA sheet steel :

Body and Door : 1 mm thickness upto 450X 450 X 170 ,
 1.2 mm thickness upto 600X 600 X 200 and
 1.5 mm thickness upto 1600 mm

Mounting plate and Gland plate : 1.5 / 2 mm thickness

- Powder coated paint finish : Body : RAL 7032 fine structure finish
 Mounting plate : Deep Orange (RAL 2000)

- Double gasket liner in PU / EPDM for durable ingress protection

- Gland plates with 16, 19, 25 & 32 mm size knock outs provided at bottom

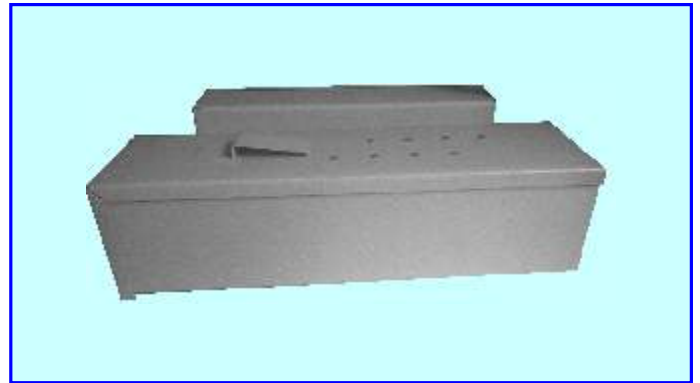
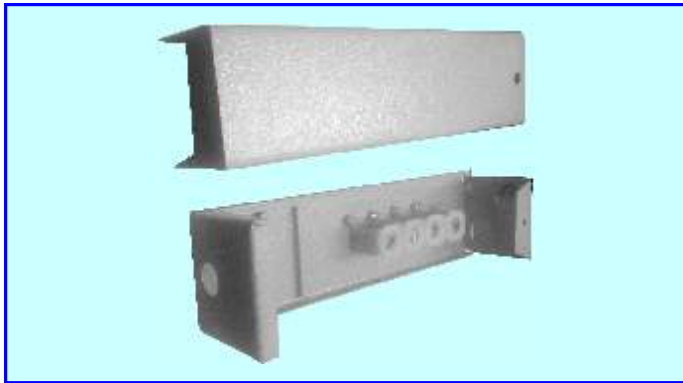
- Wall mounting brackets provided with pre-rovitted holes on back side

- Customised solutions : Ability to meet special requirements like non standard sizes, colours, door configuration, locking arrangement, IP 55 or 66 equivalent

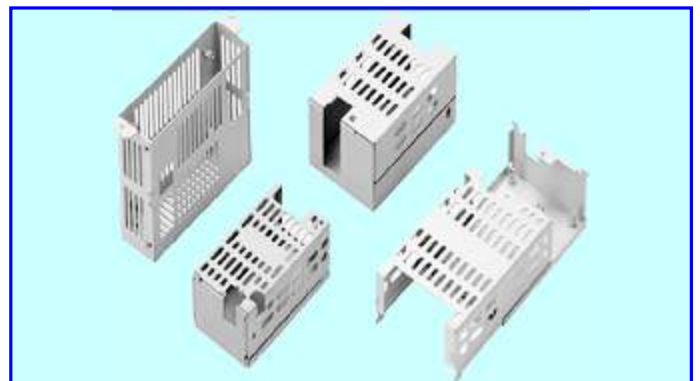
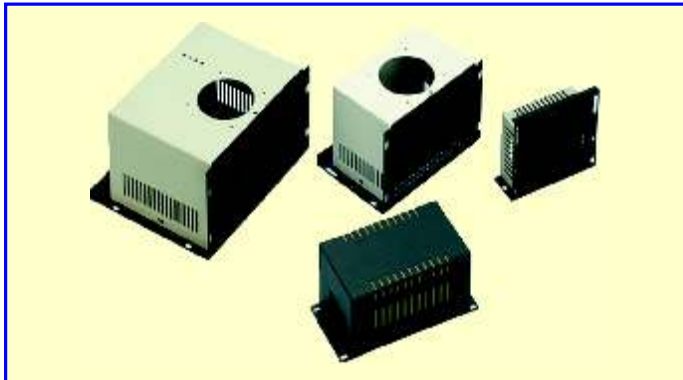


PHOENIX IMPEX

TELECOM ENCLOSURES

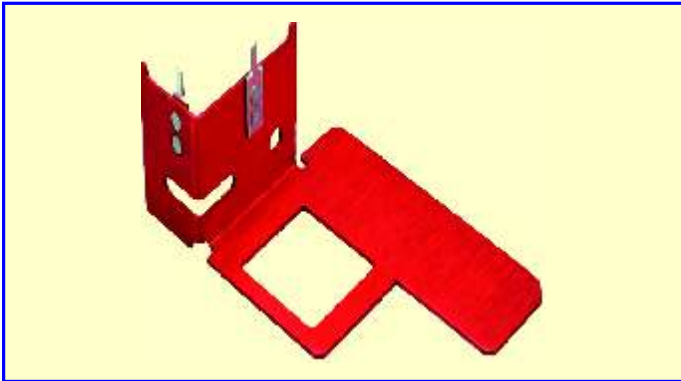


CUSTOMIZED ENCLOSURES



ACCESSORIES

- HEATSINKS
- CLAMPS
- DIN RAIL CLAMPS



CUSTOMIZED COMPONENTS

- MEET SPECIAL REQUIREMENTS
- ABILITY TO MANUFACTURE CRITICAL COMPONENTS WITH 0.01 mm TOLERANCE / ACCURACY





PHOENIX IMPEX

ESTEEMED CLIENTS

- L&T
- SIEMENS
- NELCO
- EOS POWER
- PORTESCAP INDIA PVT. LTD.
- SONODYNE INTERNATIONAL LTD.
- DEODHAR ELCTRO DESIGN PVT. LTD.
- LABTOP INSTRUMENTS PVT. LTD.
- ATLAS CATV SYSTEMS
- K. B. ELECTRONICS





PHOENIX IMPEX

B22-F, Malad Industrial Units CHSL,
Ramchandra Extension Lane,
Kanchpada, Malad (West),
Mumbai - 400 064, INDIA.
Phone : +91 9820349143.
Email : sales@phoeniximpex.in