



PHOENIX IMPEX





### **About us**

*PHOENIX IMPEX was established as a Solution Provider for Fixing and Support System Products to Industrial Applications. PHOENIX IMPEX has since grown adequately with a pool of qualified and skilled personnel specialising in Industrial Support Systems and added Hazardous Area Product and Electrical Product Solutions to our capabilities. PHOENIX IMPEX is exposed to a wide array of Electrical and Mechanical requirements of the consultants, contractors and wholesale vendors. Our aim is to become the Preferred Partner to industries such as Oil and Gas, Marine and Offshore, Industrial Construction, Telecommunication, Power Plants, Railway and other related Industrial users to meet their supply and requisition needs.*

### **Our Mission**

*To deliver Better Innovative Solutions to the industry key to our success. Being the best we can be is our motto.*

### **Mission Statement**

*Our commitment is to bring quality solutions to the markets that we serve. Knowing the markets that we serve is the key to our success. Being the best we can be is our motto.*

## INDEX

● EARTHING AND LIGHTING PROTECTION .....	1
● BRASS CABLE GLANDS .....	18
● CABLE COPPER LUGES - STANDARD BARREL .....	19
● CABLE COPPER LUGES - LONG BARREL, HEAVY DUTY .....	21
● CABLE COPPER LUGES - N SERIES .....	23
● CABLE COPPER LUGES - BELL MOUTH .....	25
● CABLE LUGS SEALED PALM .....	27
● COMPRESSION CABLE LUGS - LONG PALM .....	28
● CABLE LUGS - DIN 46235 .....	29
● CABLE LUGS - BIMETALLIC .....	30
● BIMETALLIC JOINTS - STRAIGHT TYPE .....	31
● BIMETALLIC JOINTS - REDUCER TYPE .....	31
● CABLE LUGS WITH TWO HOLES .....	32
● CABLE LUGES NARROW PALM .....	33
● CABLE JOINT - REGULAR BARREL .....	34
● CABLE JOINT - HEAVY DUTY .....	35
● CABLE JOINT - LONG BARREL .....	36
● BUTT JOINT .....	37
● CABLE CONNECTOR WITH SOLID BARRIER .....	38
● SCREW CONNECTORS .....	39
● WEAK BACK FERRULES .....	40
● DISTRIBUTION BOXES .....	14
● ELECTRICAL PANELS .....	15
● TELECOM ENCLOSURES .....	16
● CUSTOMIZED ENCLOSURES .....	16
● ACCESSORIES .....	17
● CUSTOMIZED COMPONENTS .....	17

## EARTHING AND LIGHTING PROTECTION

The "Phoenix Loc" Earthing and Lighting protection are the most reliable and reputed brand delivering high quality engineered products which provide solutions to all your earthing requirement. The Phoenix Loc earthing and lighting products are used in varied industries worldwide.

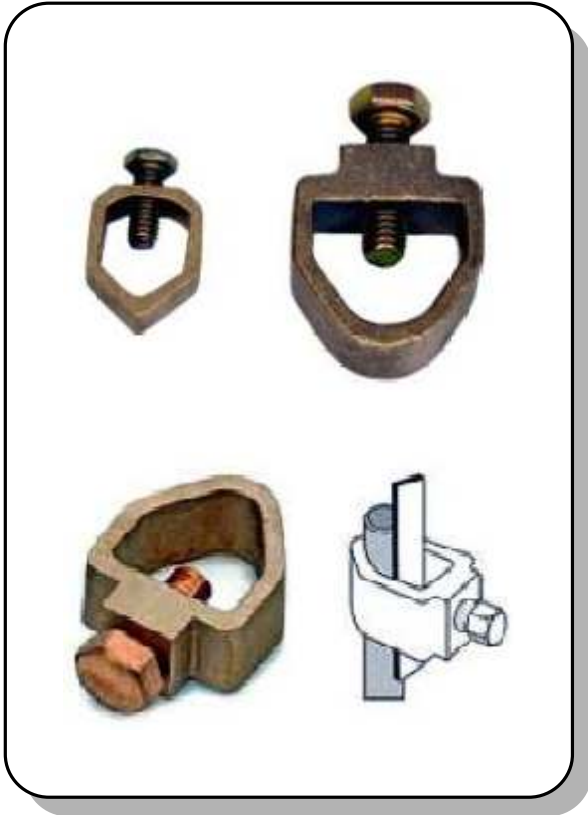
The " Phoenix Loc" Earthing and Lighting Protection are uniquely designed and subjected to rigorous physical and chemical testing to ensure compliance with the international quality standards and safety of your earthing functions.

Phoenix Impex poineers in providing engineering solutions including designing, testing validation and stimulation that can modify standard earthing solutions or develop new solutions for your specific project needs.



# EARTHING AND LIGHTING PROTECTION

## ROD TO TAPE CLAMP (TYPE A)

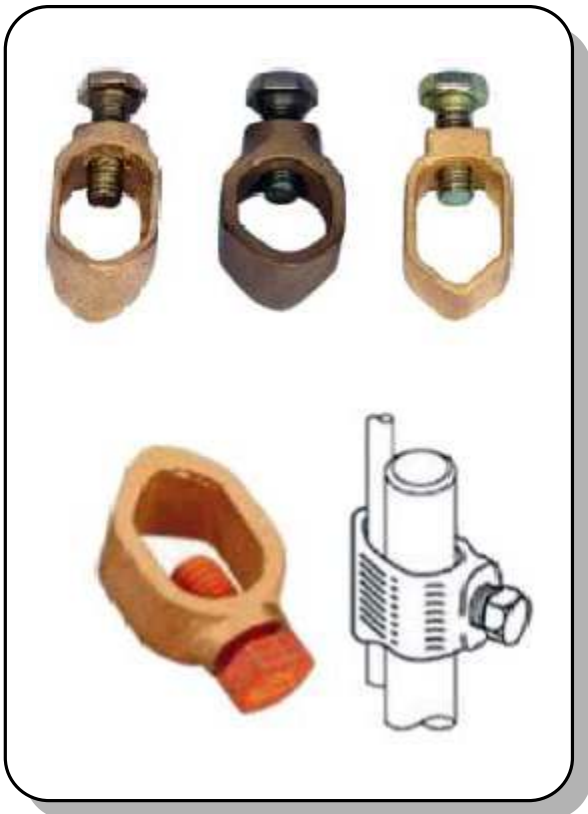


These Clamps are used for joining the earth ground rod to various size of Copper or Aluminium taps. The Clamps have high resistance to corrosion and mechanically strong to ensure a lasting connection.

Material - Copper Alloy / Gun Metal

Available - These clamps are available with copper Bolt, Stainless steel Bolt & Brass Bolts.

Product Code	Size		Max. Tape
	Inch.	mm.	Sq. mm.
PLCA1	1/2"	12.7	26 X 12
PLCA2	5/8"	16	26 X 12
PLCA3	5/8"	16	26 X 18
PLCA4	5/8"	16	40 X 10
PLCA5	5/8"	16	50 X 18
PLCA6	3/4"	20	26 X 12
PLCA7	3/4"	20	26 X 18
PLCA8	3/4"	20	40 X 10
PLCA9	3/4"	20	50 X 18
PLCA10	1"	25	26 X 12



## ROD TO TAPE CLAMP (TYPE G)

These Clamps are used for joining the Copper Bonded or solid Copper earth rod to various size of Cables. The Clamps have high resistance to corrosion and mechanically strong to ensure a lasting connection.

Material - Copper Alloy / Gun Metal

Available - These clamps are available with copper Bolt, Stainless steel Bolt & Brass Bolts.

Product Code	Size		Max. Tape
	Inch.	mm.	Sq. mm.
PLCG1	3/8"	9.5	6 - 35
PLCG2	1/2"	12.7	16 - 50
PLCG3	5/8"	16	16 - 70
PLCG4	3/4"	20	35 - 95
PLCG5	1"	25	70 - 120





**U BOLT SINGLE PLATE TYPE CLAMP FOR TAPE**

These range of clamps are used for connecting tape & cable to the earth rod or combination of both

Material - Clamp is made of Gun Metal & U bolt is made of copper alloy.

Product Code	Conductor Size		Centre
	Inch.	mm.	mm.
PLEUS1	5/8"	16	37
PLEUS2	3/4"	19	37
PLEUS3	1"	25	37
PLEUS4	1½"	38	54
PLEUS5	2"	51	64

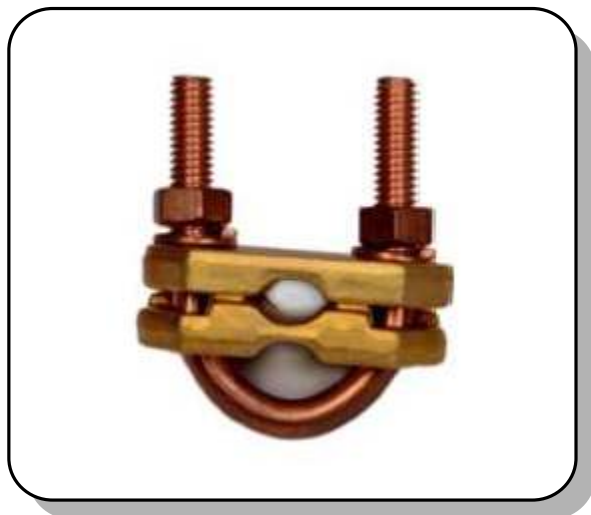


**U BOLT DOUBLE PLATE TYPE CLAMP FOR TAPE**

These range of clamps are used for connecting tape & cable to the earth rod or combination of both

Material - Clamp is made of Gun Metal & U bolt is made of copper alloy.

Product Code	Conductor Size		Plate Size
	Inch.	mm.	mm.
PLEUD1	5/8"	16	25
PLEUD2	3/4"	19	25
PLEUD3	1"	25	25
PLEUD4	1½"	38	25
PLEUD5	2"	51	25



**U BOLT DOUBLE PLATE TYPE CLAMP FOR VERTICAL CABLE**

These range of clamps are used for connecting Copper round conductor in vertical or horizontal position on rod

Material - Clamp is made of Gun Metal & U bolt is made of copper alloy.

Use - These are used to connect the conductor in Vertical or Horizontal position of Rod.

Product Code	Nominal Dia.		Conductor
	Inch.	mm.	mm.
PLUD1	5/8"	16	16 - 95
PLUD2	3/4"	20	16 - 70
PLUD3	5/8"	16	70 - 185
PLUD4	3/4"	20	70 - 150
PLUD5	5/8"	16	150 - 300
PLUD6	3/4"	20	150 - 300

# EARTHING AND LIGHTING PROTECTION



## DC TAPE CLIPS

These clips are available in Gunmetal & Aluminium. The clip secures the conductor to the building tape. The tape fits into the clip and is secured by two screws. The clip has a hole in the base for fixing to the building with a screw and plug.

Product Code	Conductor Size	Material
	mm	
PLDCG1	20 x 3	GUN METAL
PLDCG2	25 x 3	GUN METAL
PLDCG3	25 x 4	GUN METAL
PLDCG4	25 x 6	GUN METAL
PLDCG5	31 x 3	GUN METAL
PLDCG6	31 x 6	GUN METAL
PLDCG7	38 x 3	GUN METAL
PLDCG8	38 x 6	GUN METAL
PLDCG9	40 x 4	GUN METAL
PLDCG10	40 x 6	GUN METAL
PLDCG11	50 x 3	GUN METAL
PLDCG12	50 x 4	GUN METAL
PLDCG13	50 x 6	GUN METAL



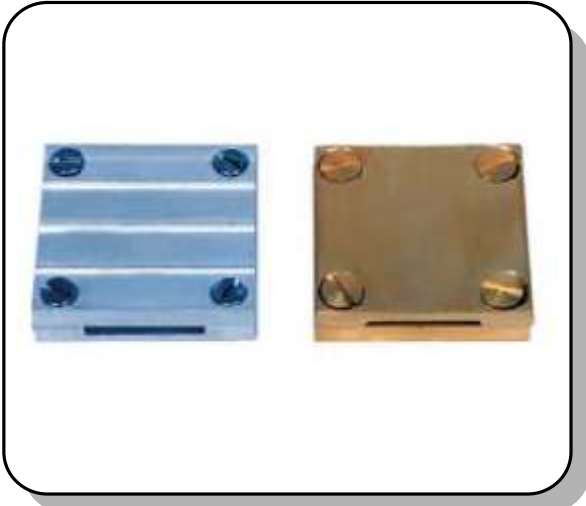
Product Code	Conductor Size	Material
	mm	
PLDCA1	20 x 3	ALUMINIUM
PLDCA2	25 x 3	ALUMINIUM
PLDCA3	25 x 6	ALUMINIUM
PLDCA4	50 x 3	ALUMINIUM
PLDCA5	50 x 6	ALUMINIUM

## SQUARE TAPE CLAMP

These four way square cross tape clamp are suitable for crossing over the tape. This helps to pass tape straight through joints in continuous network.

Material - Gunmetal / Aluminium

Use - Four way connection for Tape



Product Code	Conductor Size	Material
	mm	
PLSCG1	25 x 3	GUNMETAL
PLSCG2	25 x 6	GUNMETAL
PLSCG3	31 x 3	GUNMETAL
PLSCG4	38 x 6	GUNMETAL
PLSCG5	50 x 3	GUNMETAL
PLSCG6	50 x 6	GUNMETAL
PLSCG7	25 x 3	ALUMINIUM
PLSCG8	25 x 6	ALUMINIUM
PLSCG9	38 x 6	ALUMINIUM
PLSCG10	50 x 6	ALUMINIUM



**OBLONG TEST OF JUNCTION CLAMP**

These clamps are used straight tape to tape joint. Oblong test clamps are used for tape to tape over lap & joined by two screw.

Product Code	Conductor Size		Material
	mm		
PLOC1	26 x 8		GUNMETAL
PLOC2	26 x 8		Ph. BRONZE
PLOC3	26 x 8		ALUMINIUM
PLOC4	38 x 6		GUNMETAL
PLOC5	51 x 10		GUNMETAL



**WATER MAIN BOND**

These clamps are used for bonding of metallic pipe & copper tape to Earthing Protection System.

Product Code	Conductor Size		Material
	mm		
PLWC1	26		COPPER
PLWC2	26		ALUMINIUM



**TOWER EARTH CLAMP SINGLE & DOUBLE**

These clamps is suitable for bonding copper conductor to steel surface in area where the clamp is protected or unlikely to suffer damage.

**SINGLE PLATE**

Product Code	Conductor Size		Material
	mm	Bolt Size	
PLTCS1	16 -70	M10	GUNMETAL
PLTCS2	70 - 120	M12	GUNMETAL
PLTCS3	120 - 185	M12	GUNMETAL
PLTCS4	185 - 240	M12	GUNMETAL



**DOUBLE PLATE**

Product Code	Conductor Size		Material
	mm	Bolt Size	
PLTCD1	16 -70	M10	GUNMETAL
PLTCD2	70 - 120	M12	GUNMETAL
PLTCD3	120 - 185	M12	GUNMETAL
PLTCD4	185 - 240	M12	GUNMETAL



# EARTHING AND LIGHTING PROTECTION



## RAIN WATER PIPE BOND CLAMP

This clamp is used for bonding tape to rainware pipe

Product Code	Size		Material
	Width	Bolt Size	
PLRWC1	26	M10	COPPER
PLRWC2	38	M12	COPPER
PLRWC3	26	M12	ALUMINIUM
PLRWC4	38	M12	ALUMINIUM



## TEST & JUNCTION CLAMP

This is used for straight through joints for disconnecting & testing purpose

Made of GUNMETAL

Product Code	Conductor Size	Material
	mm	
PLTJC1	50	GUNMETAL
PLTJC2	70	GUNMETAL
PLTJC3	95	GUNMETAL



## TEE CLAMP

This is used for forming tee joints or for disconnecting & testing purpose.

Made of GUNMETAL

Product Code	Conductor Size	Material
	mm	
PLTC1	50	GUNMETAL
PLTC2	70	GUNMETAL
PLTC3	95	GUNMETAL



## C-CLAMP CONNECTOR

These range taking connectors are mainly used for tap or parallel connection of copper cable in earthing applications.

Product Code	Conductor Size	Material
	mm	
PLCC1	16 - 35	COPPER
PLCC2	25 - 35	COPPER
PLCC3	50 - 70	COPPER
PLCC4	70 - 95	COPPER



**ONE HOLE CABLE CLIP**

These are used to secure the conductor on structure.

Product Code	Conductor Size		Material
	mm		
PLOHC1	50		COPPER
PLOHC2	70		COPPER
PLOHC4	90		COPPER



**HEAVY DUTY SADDLE**

Product Code	Conductor Size		Material
	mm		
PLHS1	8		GUNMETAL
PLHS2	8		ALUMINIUM
PLHS3	10		GUNMETAL



**HEAVY DUTY SADDLE**

Product Code	Conductor Size		Material
	mm		
PLSCC1	50		GUNMETAL
PLSCC2	70		GUNMETAL
PLSCC3	95		GUNMETAL



**SQUARE CABLE TO TAPE CLAMP**

Used for crossing over tape and cable

Product Code	Conductor Size		Material
	mm	Tap	
PLSTC1	50	25 x 30	GUNMETAL
PLSTC2	70	25 x 30	GUNMETAL
PLSTC3	95	25 x 30	GUNMETAL

# EARTHING AND LIGHTING PROTECTION



### EARTH BARS FOR EARTH HOUSING

These earth bars fit into slot provided in the plastic & concrete earth housing, where multiple connections are required to earth rod.

Product Code	Size in mm		Material
	Width	Length	
PLEBEH-1	25 X 6	200	COPPER
PLEBEH-2	31 X 6	250	COPPER
PLEBEH-3	31 X 6	300	COPPER



### TAPE CLIP

These clips are made of Copper or Aluminium Used for securing the flat tape to structure.

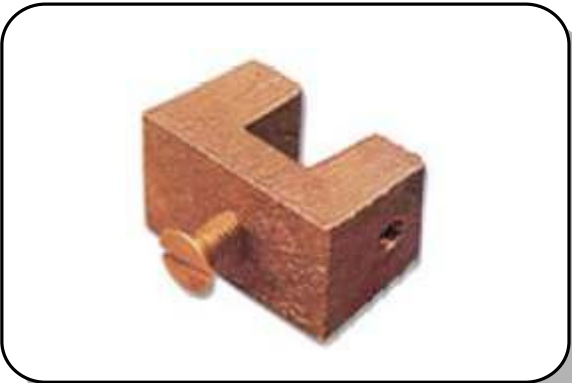
Product Code	Tap Size
	Inch
PLTC-1	20 x 3
PLTC-2	25 x 3
PLTC-3	50 x 6



### VERTICAL ROD SUPPORTING FLAT SADDLE

These are used for supporting air rod to flat surface. These saddle are made of Gunmetal as well as Aluminium.

Product Code	Conductor Size Sq. mm	Thread Dia.
PLFS-1	50	5/8"
PLFS-2	50	3/4"
PLFS-3	70	5/8"
PLFS-4	70	3/4"
PLFS-5	95	5/8"
PLFS-6	95	3/4"



### GLAZING BAR HOLDFAST

These blocks supplied complete with fixing screw, helps DC Clips to be secure to steel frame.

Product Code	Glazing Bar mm	Material
PLGHF-1	12	GUNMETAL
PLGHF-2	12	ALUMINIUM

# EARTHING AND LIGHTING PROTECTION



### BACK PLATE HOLDFAST STEM

These are used for installation of tape away from wall. These are used along with DC Clip.

Product Code	Weight Kg.	Material
PLBHS-1	0.3	GUNMETAL
PLBHS-2	0.13	ALUMINIUM



### PLATE TYPE CLAMP

These are used along with square tape, for disconnecting joints between down conductor system & earthing system.

Product Code	Tape Size mm	Material
PLBHS1	25 x 3	GUNMETAL



### FLEXIBLE BRAID BOND

These are used as a flexible earth bonding leads

Product Code	Conductor Size		hOLE
	width	LENGTH	
PLFBB-1	25 x 3	200	10 mm
PLFBB-2	25 x 3	300	10 mm
PLFBB-3	25 x 3	400	10 mm



### SPLIT BOLT CONNECTOR

These bolts are used for copper to copper connection. These connetors accepts solid standard conductor.

Product Code	Conductor Size mm
PLSB-1	10 - 16
PLSB-2	25 - 35
PLSB-3	35 - 50
PLSB-4	50 - 95
PLSB-5	50 - 120
PLSB-6	95 - 185



### LATTICE COPPER EARTH MAT

Lattice Copper Earth Mat is the lower cost option to solid copper earth plate

Product Code	Size mm
	mm
PLICP-1	500 x 500 x 3
PLICP-2	600 x 600 x 3
PLICP-3	900 x 900 x 3

# EARTHING AND LIGHTING PROTECTION



### ROD TO TAPE COUPLING

These are used with side mounting brackets or the building in holdfast and air rod to tape joint.

Product Code	Thread Size	Material
PLRTC-1	5/8"	GUNMETAL
PLRTC-2	5/8"	ALUMINIUM
PLRTC-3	3/4"	GUNMETAL
PLRTC-4	3/4"	ALUMINIUM



### ROD TO CABLE COUPLING

These are used with side mounting brackets or the building in holdfast and air rod to cable joint.

Product Code	Thread Size	Material
PLRCC-1	5/8"	GUNMETAL
PLRCC-2	5/8"	ALUMINIUM
PLRCC-3	3/4"	GUNMETAL
PLRCC-4	3/4"	ALUMINIUM



### ROD BRACKET

The Rod to tape coupling is used in conjunction with side mounting bracket to secure air terminal & connect to tape

Product Code	Rod Dia.	Material
PLRBC-1	16	GUNMETAL
PLRBC-2	20	ALUMINIUM
PLRBC-3	16	GUNMETAL
PLRBC-4	20	ALUMINIUM



### ROD TO CABLE LUG CLAMP

These clamp are used with threaded and unthreaded copper / copper bonded earth rods. Suitable for connecting a cable lugs to earth rod.

Product Code	Rod Size mm		Material
	Inch	mm	
PLRTCC-101	3/8"	9.5	CU BONDED
PLRTCC-102	5/8"	16	CU BONDED
PLRTCC-103	5/8"	16	SOLID CU
PLRTCC-104	3/4"	20	CU BONDED
PLRTCC-105	3/4"	20	SOLID CU



### EYE BOLT

These are used direct onto a copper bonded earth rod offering an earth point for boats trucks.

Product Code	Rod Size
	Inch
PLEB-1	5/8"
PLEB-2	3/4"





**EARTH ROD COPPER BONDED - EXTERNALLY THREADED**

Copper Bonded Earth Rod are the economical way of achieving the low earth resistance. The threads are formed by a rolling process. The rods are made from low carbon steel core.

Product Code	Rod Size mm		Thread Size
	Length	Rod Dia	
PLERC-101	1200	8.5	3/8"
PLERC-102	1500	8.5	3/8"
PLERC-103	1800	8.5	3/8"
PLERC-104	2400	8.5	3/8"
PLERC-105	1200	11.4	1/2"
PLERC-106	1500	11.4	1/2"
PLERC-107	1800	11.4	1/2"
PLERC-108	2400	11.4	1/2"
PLERC-109	1200	13.7	5/8"
PLERC-110	1500	13.7	5/8"
PLERC-111	1800	13.7	5/8"
PLERC-112	2000	13.7	5/8"
PLERC-113	2400	13.7	5/8"
PLERC-114	3000	13.7	5/8"
PLERC-115	3600	13.7	5/8"
PLERC-116	1200	16.7	3/4"
PLERC-117	1500	16.7	3/4"
PLERC-118	1800	16.7	3/4"
PLERC-119	2000	16.7	3/4"
PLERC-120	2400	16.7	3/4"
PLERC-121	3000	16.7	3/4"
PLERC-122	3600	16.7	3/4"



**DRIVING HEAD**

These are the reusable driving heads are suitable for driving the earth rods by hand or by power hammer. The driving head screws into the coupling to allow deep driving of earth rods & to protect threads. These are made of High Tensile Steel.

Product Code	Thread	Length (mm)
PLDH-1	3/8"	45
PLDH-2	1/2"	50
PLDH-3	5/8"	54
PLDH-4	3/4"	65



**COUPLINGS - THREADED**

These are used to join threaded copper bonded earth rods together. They allow deep driving & ensures the continuous contact between rods. These are also protecting rod thread while using the driving stud. These are made of Gunmetal

Product Code	Thread	Length (mm)
PLCT-1	1/2"	70
PLCT-2	3/8"	65
PLCT-3	5/8"	75
PLCT-4	3/4"	80

# EARTHING AND LIGHTING PROTECTION



## EARTH ROD COPPER BONDED INTERNALLY THREADED

Copper Bonded Earth Rod are the economical way of achieving the low earth resistance. The rods are made from low carbon steel core.

Product Code	Rod Size mm	
	Length	Rod Dia
PLITC-101	1200	9.5
PLITC-102	1500	9.5
PLITC-103	1800	9.5
PLITC-104	2000	9.5
PLITC-105	1200	12.7
PLITC-106	1500	12.7
PLITC-107	1800	12.7
PLITC-108	2000	12.7
PLITC-109	2400	12.7
PLITC-110	3000	12.7
PLITC-111	1200	14.2
PLITC-112	1500	14.2
PLITC-113	1800	14.2
PLITC-114	2000	14.2
PLITC-115	2400	14.2
PLITC-116	3000	14.2
PLITC-117	3600	14.2
PLITC-118	1200	17.2
PLITC-119	1500	17.2
PLITC-120	1800	17.2
PLITC-121	2000	17.2
PLITC-122	2400	17.2
PLITC-123	3000	17.2
PLITC-124	3600	17.2



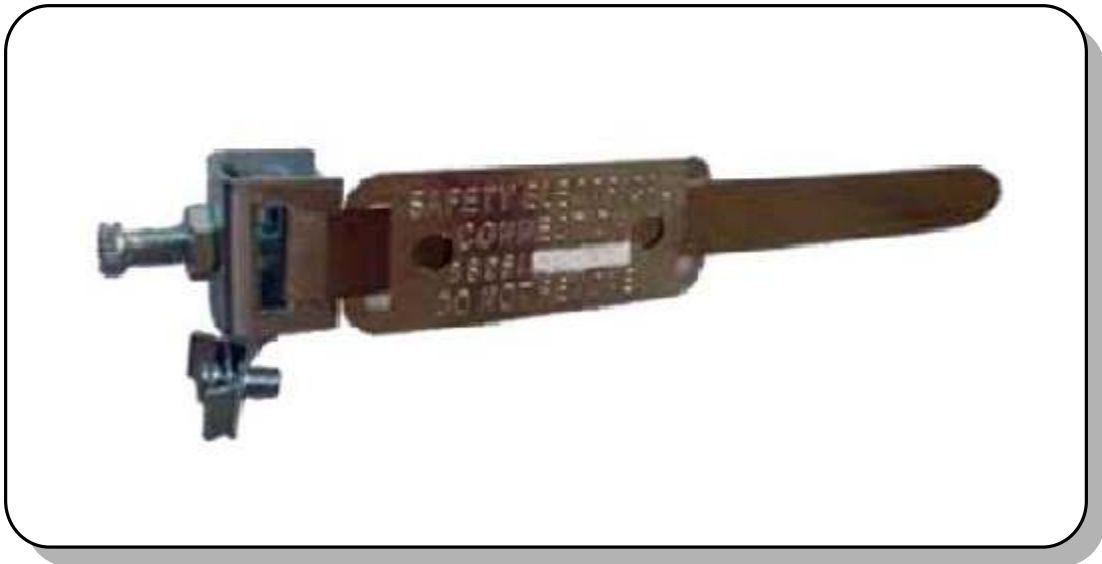
## COUPLING DOWELS

These coupling dowels are used to join solid copper or stainless steel rods

Product Code	Rod Size mm	
	Length	Rod Dia
PLCD-1	38	1/2"
PLCD-2	38	5/8"
PLCD-3	38	3/4"

## EARTH CLAMP

- Designed & Manufactured as per procedures, as per BS951 standards.
- Available in 2 Colours :  
Red for Non-corrosive dry atmosphere and Blue for corrosive humid conditions.
- Available in 3 standard Band Lengths to suit  
Pipe diameters of 12mm - 32mm, 32mm - 50mm and 50mm - 75mm
- Available of 2 Terminal Sizes :  
A-D for conductors of 2.5mm<sup>2</sup> - 10 mm<sup>2</sup> and A-E for conductors of 2.5mm<sup>2</sup> - 16 mm<sup>2</sup>  
(A-E being identified by its Blue safety lable)
- A-D 2.5mm<sup>2</sup> - 10mm<sup>2</sup> Colour coded Red suitable for clean dry atmospheric conditions Brass PEC01
- A-D 2.5mm<sup>2</sup> - 10mm<sup>2</sup> Colour coded Blue suitable for all environment Phosphorus Bronze PEC02
- A-D 2.5mm<sup>2</sup> - 10mm<sup>2</sup> Colour coded Blue suitable for all environment Phosphorus Bronze PEC03



## MECHANICAL FIXING LUG



Product Code	Conductor Size	Stud Size
PLMFL1	16	M8
PLMFL2	25	M8
PLMFL3	35	M12
PLMFL4	50	M12
PLMFL5	75	M12
PLMFL6	100	M12
PLMFL7	120	M15
PLMFL8	170	M15
PLMFL9	200	M16
PLMFL10	250	M16
PLMFL11	300	M20
PLMFL12	415	M20
PLMFL3	700	M20

## BRASS CABLE GLANDS

### Technical Data :

∴ **General Specification** : BS standard BS 6121 part I 1989

∴ **Material:**

- a) Glands - Bodies, Caps & Rings are manufactured from brass.
- b) Seals - Nitrile rubber
- c) Shrouds / Sleeves - Black Poly Vinyl Chloride (PVC)
- d) Earth tag - Natural Brass
- e) Locknut - Natural Brass / Galvanised

∴ **Finish** : Natural Brass / Nickel Plated / Tinned

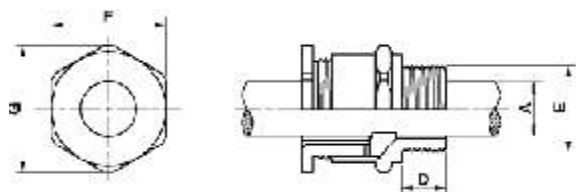
∴ **Finish** : Natural Brass, Also available in Nickel Plating

∴ **Entry Thread** : Isometric ( Imperial thread, NPT thread, PG thread available on request )

### Gland Selection Chart :

The gland sizes recommended are in accordance with calculations based on cables manufactured to BS 6346 (1969) and WE do not accept any responsibility for cables that prove to deviate materially from the nominal diameters quoted in BS 6346 (1969).

600/1000 stranded copper conductors PVC insulated with steel wire armour & PVC sheathed overall														
Cable Size Conductor		Number Of Cores												
Nom. area mm <sup>2</sup>	Neutral	1	2	3	31/2	4	5	7	10	12	19	27	37	48
1.5	-	-	20/16	20/16	-	20S	20S	20S	20	20	25	25	32	32
2.5	-	-	20S	20S	-	20S	20S	20	25	25	25	32	32	40
4	-	-	20S	20	-	20	20	25	25	32	32	40		
6	-	-	20	20	-	20								
10	-	-	25	25	-	25								
16	-	-	25	25	-	25								
25	16	-	32	32	32	32								
			25	25		32								
35	16	-	32	32	32	40								
			25	32		32								
50	25	25	32	32	32	40								
70	35	25	32	40	40	40								
95	50	25	40	40	50S	50S								
120	70	32	40	50S	50	50								
150	70	32	50S	50	50	63S								
185	95	32	50	50	63S	63								
240	120	40	50	63S	63	75S								
300	150	40	63S	63S	75S	75								
300	185	-	-	-	75	-								
400	185	50S	63	75S	90	90								
500	-	50	-	-	-	-								
630	-	50	-	-	-	-								
800	-	63S	-	-	-	-								
1000	-	63	-	-	-	-								



### Features :

- ∴ To BS6121 : Part 1
- ∴ Suitable for unarmoured, plastic or rubber sheathed cable
- ∴ Suitable for most indoor & outdoor applications
- ∴ Seal rated to IP66
- ∴ Finish : Natural Brass & also available in Electro Tinned & Nicke Plated

### APPLICATION :

For use with all types of unrmoured and PVC cable, where it is essential to produce IP66 on inner shelth.

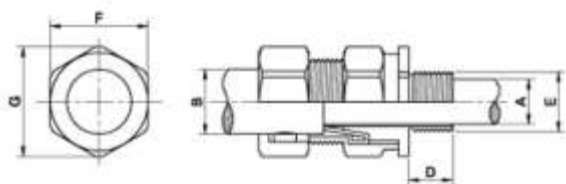
Gland Size & Termination Thread Size		Minimum Length of Thread D"	Cable Diameter		Across Flat	Across Corner	Cat #
Metric	IMP		Dia Inner Sheath Max "A"	Dia Outer Sheath Max "B"			
16L	5/8	15	8.7	3.5	19.0	22.0	P2 - 16L
20S	3/4	15	11.7	8.0	21.0	24.0	P2 - 20S
20L	3/4	15	14.0	11.0	24.0	25.0	P2 - 20L
25S	1	15	17.0	12.0	28.0	26.6	P2 - 25S
25L	1	15	20.0	13.0	30.0	31.5	P2 - 25L
32S	1½	15	23.0	16.5	38.0	33.3	P2 - 32S
32L	1½	15	26.3	19.0	41.0	41.0	P2 - 32L
40S	1½	20	29.0	23.0	45.0	45.5	P2 - 40S
40L	1½	20	33.0	25.0	46.0	50.0	P2 - 40L
50S	2	20	38.0	31.5	59.0	51.0	P2 - 50S
50L	2	20	46.0	36.5	64.0	65.0	P2 - 50L
63S	2½	20	50.1	42.5	70.0	70.0	P2 - 63S
63L	2½	20	56.0	44.5	75.0	77.0	P2 - 63L
75S	3	25	62.0	54.5	84.0	83.0	P2 - 75S
75L	3	25	68.0	60.5	84.0	93.0	P2 - 75L
88L	3½	25	77.0	66.0	90.0	100.0	P2 - 88L
100	4	25	88.0	80.0	119.5	132.0	P2 - 100
110	½	75	95.0	89.0	143.0	128.5	P2 - 110



## BRASS CABLE GLANDS



PW-2 PART



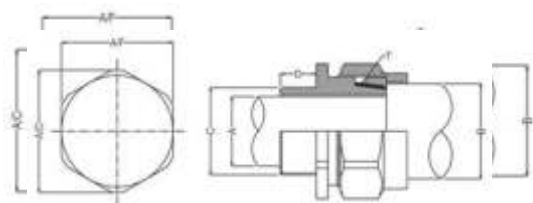
### Features :

- ⌘ Suitable for single wire armoured, plastic or rubber sheathed Cables
- ⌘ Application for use in dry, indoor situations
- ⌘ Low cost two part design without seal
- ⌘ Finish: Natural Brass, Also available in Nickel Plating
- ⌘ Entry thread are in metric
- ⌘ Sizes available from 20mm S & L to 90mm S & L
- ⌘ Can be supplied with earth tag & shroud as Kit for outdoor application

Size	Cable Dimension			Entry Thread Length 'D'	Metric Entry Thread 'E'	Across Flat Dia. 'F'	Across Corner 'G'	Product Code
	Armour Wire Diameter	Under Armour Dia. 'A' mm	Overall Dia. 'B' mm					
16	0.90	8.60	13.50	10.00	16mm	20.00	23.00	PW2 - 16
20S	0.90	14.25	16.20	10.00	20mm	21.00	23.00	PW2 - 20S
20L	0.90/1.25	16.50	18.50	10.00	20mm	24.00	25.00	PW2 - 20L
25L	1.25/1.60	21.00	27.50	10.00	25mm	34.00	37.50	PW2 - 25L
32L	1.60/2.00	27.50	34.50	10.00	32mm	40.00	45.00	PW2 - 32L
40L	1.60/2.00	34.50	41.50	15.00	40mm	48.50	54.00	PW2 - 40L
50S	2.00/2.50	42.50	50.20	15.00	50mm	59.50	67.50	PW2 - 50S
50L	2.00/2.50	45.00	50.25	15.00	50mm	63.50	71.00	PW2 - 50L
63S	2.50	53.50	62.50	15.00	63mm	73.00	83.00	PW2 - 63S
63L	2.50	58.00	67.00	15.00	63mm	76.00	85.00	PW2 - 63L
75S	2.50/3.15	64.50	76.00	15.00	75mm	88.00	99.00	PW2 - 75S
75L	2.50	68.50	80.00	15.00	75mm	94.00	106.00	PW2 - 75L



PW-4 PART



### Features :

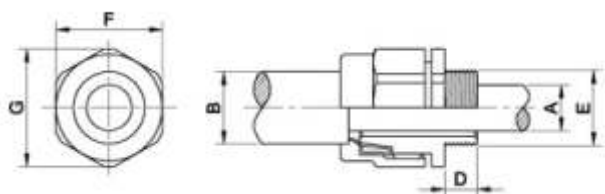
- :: Suitable for single wire armoured, plastic or rubber sheathed Cables
- :: Application for use in dry, indoor situations
- :: Low cost two part design without seal
- :: Finish: Natural Brass, Also available in Nickel Plating
- :: Entry thread are in metric
- :: Sizes available from 20mm S & L to 90mm S & L
- :: Can be supplied with earth tag & shroud as Kit for outdoor application

Size	Cable Dimension			Entry Thread Length 'D'	Metric Entry Thread 'E'	Across Flat Dia. 'F'	Across Corner 'G'	Product Code
	Armour Wire Diameter	Under Armour Dia. 'A' mm	Overall Dia. 'B' mm					
16	0.90	8.60	13.50	10.00	16mm	20.00	23.00	PW4 - 16
20S	0.90	12.50	17.00	10.00	20mm	21.00	23.00	PW4 - 20S
20L	0.90/1.25	14.25	20.50	10.00	20mm	24.00	25.00	PW4 - 20L
25S	1.25/1.60	18.50	24.75	10.00	25mm	31.00	33.00	PW4 - 25S
25L	1.25/1.60	20.80	28.00	10.00	25mm	34.00	38.00	PW4 - 25L
32S	1.60/2.00	26.80	33.75	10.00	32mm	40.50	45.50	PW4 - 32S
32L	1.60/2.00	26.80	33.75	10.00	32mm	40.50	45.50	PW4 - 32L
40S	1.60/2.00	30.50	37.50	15.00	40mm	45.00	50.25	PW4 - 40S
40L	1.60/2.00	32.75	41.00	15.00	40mm	48.75	53.75	PW4 - 40L
50S	2.00/2.50	40.50	48.75	15.00	50mm	57.50	64.75	PW4 - 50S
50L	2.00/2.50	44.50	53.80	15.00	50mm	61.00	69.75	PW4 - 50L
63S	2.50	51.50	60.75	15.00	63mm	70.00	78.25	PW4 - 63S
63L	2.50	56.50	65.50	15.00	63mm	75.00	84.50	PW4 - 63L
75S	2.50/3.15	62.25	72.50	15.00	75mm	84.50	94.50	PW4 - 75S
75L	2.50	68.25	78.50	15.00	75mm	90.00	101.00	PW4 - 75L

## BRASS CABLE GLANDS



PCW-4 PART



### Features :

- ∴ Suitable for single wire armoured, plastic or rubber sheathed Cables
- ∴ Suitable for most climatic conditions weather proof and water proof
- ∴ Finish: Natural Brass, Also available in Nickel Plating
- ∴ Entry thread are in metric
- ∴ Sizes available from 20mm S & L to 90mm S & L
- ∴ Can be supplied with earth tag & shroud as Kit for outdoor application

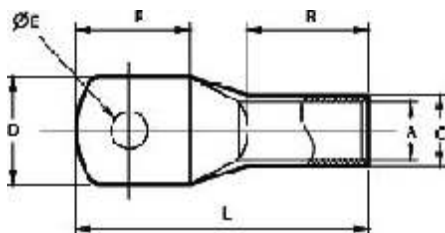
### APPLICATION :

For use with all types of SWA cable, where it is essential to produce an IP66 seal onto the outer sheath

Size	Cable Dimension			Entry Thread Length 'D'	Metric Entry Thread 'E'	Across Flat Dia. 'F'	Across Corner 'G'	Product Code
	Armour Wire Diameter	Under Armour Dia. 'A' mm	Overall Dia. 'B' mm					
16	0.90	8.60	13.50	10.00	16mm	20.00	23.00	PCW4 - 16
20S	0.90/1.25	14.00	19.00	10.00	20mm	24.00	27.00	PCW4 - 20S
20L	0.90/1.25	16.00	23.20	10.00	20mm	27.50	30.50	PCW4 - 20L
25S	1.25/1.60	18.50	24.40	10.00	25mm	32.75	36.50	PCW4 - 25S
25L	1.25/1.60	21.00	30.50	10.00	25mm	34.00	38.00	PCW4 - 25L
32S	1.60/2.00	27.00	34.20	10.00	32mm	43.00	48.00	PCW4 - 32S
32L	1.60/2.00	27.00	34.50	10.00	32mm	43.00	48.00	PCW4 - 32L
40S	1.60/2.00	31.50	39.75	15.00	40mm	49.25	55.50	PCW4 - 40S
40L	1.60/2.00	32.50	41.75	15.00	40mm	51.00	57.50	PCW4 - 40L
50S	2.00/2.50	41.00	50.25	15.00	50mm	61.75	68.50	PCW4 - 50S
50L	2.00/2.50	44.50	53.00	15.00	50mm	63.50	72.00	PCW4 - 50L
63S	2.50	52.00	62.00	15.00	63mm	73.50	81.75	PCW4 - 63S
63L	2.50	56.50	66.50	15.00	63mm	78.50	88.50	PCW4 - 63L
75S	2.50/3.15	63.50	74.00	15.00	75mm	87.50	97.75	PCW4 - 75S
75L	2.50	68.50	78.50	15.00	75mm	96.00	107.50	PCW4 - 75L

## CABLE COPPER LUGES - STANDARD BARREL

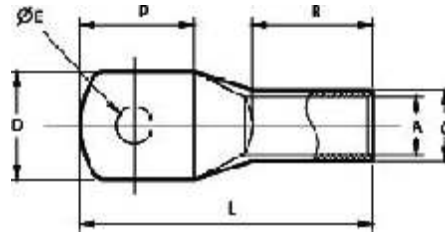
Material : E - Copper  
 Finish : Electro - Tinned  
 Features : With Inspection Hole



PART NO.	CABLE mm <sup>2</sup>	Ø E	DIMENSIONS IN MM						PER BOX
			A	C	D	P	B	L	
PLR0001E04	1.5	4.2	1.8	3.7	8	9	5	16	2000
PLR0001E05	1.5	5.2	1.8	3.7	8	10	5	16	2000
PLR0001E06	1.5	6.2	1.8	3.7	10	12	5	18	2000
PLR0002E04	2.5	4.2	2.4	4	8	9	7	18	2000
PLR0002E05	2.5	5.2	2.4	4	8	9	7	18	2000
PLR0002E06	2.5	6.2	2.4	4	10	12	7	20	2000
PLR0002E08	2.5	8.2	2.4	4	10	15	7	24	2000
PLR0004E04	4	4.2	3.1	4.8	10	11	7	21	2000
PLR0004E05	4	5.2	3.1	4.8	10	11	7	21	2000
PLR0004E06	4	6.2	3.1	4.8	10	11	7	21	2000
PLR0004E08	4	8.2	3.1	4.8	12	15	7	25	2000
PLR0006E04	6	4.2	3.8	5.5	10	11	11	26	1000
PLR0006E05	6	5.2	3.8	5.5	10	11	11	26	1000
PLR0006E06	6	6.2	3.8	5.5	10	11	11	26	1000
PLR0006E08	6	8.2	3.8	5.5	12	15	11	30	1000
PLR0006E10	6	10.5	3.8	5.5	14	19	11	39	1000
PLR0010E05	10	5.2	4.5	6.2	11	13	11	27	1000
PLR0010E06	10	6.2	4.5	6.2	11	13	11	27	1000
PLR0010E08	10	8.2	4.5	6.2	12	17	11	30	1000
PLR0010E10	10	10.5	4.5	6.2	17	23	11	35	1000
PLR0010E13	10	13	4.7	7.1	17	23	11	35	1000
PLR0016E05	16	5.2	5.4	7.1	11	15	13	32	500
PLR0016E06	16	6.2	5.4	7.1	11	15	13	32	500
PLR0016E08	16	8.2	5.4	7.1	11	15	13	32	500
PLR0016E10	16	10.5	5.4	7.1	15	23	11	36	500
PLR0016E13	16	13	5.4	7.1	18	23	11	36	500
PLR0020E08	20	8.2	6.1	7.7	12	14	12	30	300
PLR0025E05	25	5.2	6.8	8.8	13	15	12	32	300
PLR0025E06	25	6.2	6.8	8.8	13	15	12	32	300
PLR0025E08	25	8.2	6.8	8.8	13	15	12	32	300
PLR0025E10	25	10.5	6.8	8.8	17	22	12	38	300
PLR0025E13	25	13	6.8	8.8	17	22	12	38	300
PLR0035E05	35	5.2	8.2	10.6	15	20	13	38	200
PLR0035E06	35	6.2	8.2	10.6	15	20	13	38	200
PLR0035E08	35	8.2	8.2	10.6	15	20	13	38	200
PLR0035E10	35	10.5	8.2	10.6	15	20	13	38	200
PLR0035E13	35	13	8.2	10.6	17	20	13	41	200
PLR0035E17	35	17	8.2	10.6	22	33	13	52	200
PLR0050E06	50	6.2	9.5	12.4	18	20	17	42	150
PLR0050E08	50	8.2	9.5	12.4	18	20	17	42	150
PLR0050E10	50	10.5	9.5	12.4	18	20	17	42	150
PLR0050E13	50	13	9.5	12.4	18	20	17	42	150
PLR0070E08	70	8.2	11.2	14.7	21	23	18	64	100
PLR0070E10	70	10.5	11.2	14.7	21	23	18	46	100
PLR0070E13	70	13	11.2	14.7	21	23	18	46	100
PLR0070E14	70	14.7	11.2	14.7	21	23	18	46	100
PLR0070E17	70	17	11.2	14.7	24	27	18	46	100

## CABLE COPPER LUGES - STANDARD BARREL

Material : E - Copper  
 Finish : Electro - Tinned  
 Features : With Inspection Hole

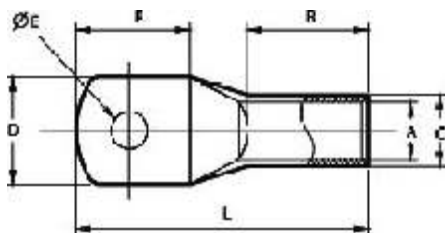


PART NO.	CABLE mm <sup>2</sup>	Ø E	DIMENSIONS IN MM						PER BOX
			A	C	D	P	B	L	
PLR0095E10	95	10.5	13.5	17.4	25	28	20	55	75
PLR0095E13	95	13	13.5	17.4	25	28	20	55	75
PLR0095E14	95	14.7	13.5	17.4	25	28	20	55	75
PLR0095E17	95	17	13.5	17.4	25	30	20	60	75
PLR0120E08	120	8.2	15	19.4	28	27	23	60	50
PLR0120E10	120	10.5	15	19.4	28	27	23	60	50
PLR0120E13	120	13	15	19.4	28	27	23	60	50
PLR0120E14	120	14.7	15	19.4	28	27	23	60	50
PLR0120E17	120	17	15	19.4	28	33	23	65	50
PLR0150E08	150	8.2	16.5	21.2	30	35	26	70	40
PLR0150E10	150	10.5	16.5	21.2	30	35	26	70	40
PLR0150E13	150	13	16.5	21.2	30	35	26	70	40
PLR0150E14	150	14.7	16.5	21.2	30	35	26	70	40
PLR0150E17	150	17	16.5	21.2	30	35	26	70	40
PLR0185E10	185	10.5	18.5	23.5	34	40	32	82	30
PLR0185E13	185	13	18.5	23.5	34	40	32	82	30
PLR0185E14	185	14.7	18.5	23.5	34	40	32	82	30
PLR0185E17	185	17	18.5	23.5	34	40	32	82	30
PLR0240E10	240	10.5	21	26.5	38	40	38	92	20
PLR0240E13	240	13	21	26.5	38	40	38	92	20
PLR0240E14	240	14.7	21	26.5	38	40	38	92	20
PLR0240E17	240	17	21	26.5	38	40	38	92	20
PLR0240E21	240	21	21	26.5	38	40	38	92	20
PLR0300E10	300	10.5	23.5	30	43	45	41	101	15
PLR0300E13	300	13	23.5	30	43	45	41	101	15
PLR0300E4	300	14.7	23.5	30	43	45	41	101	15
PLR0300E17	300	17	23.5	30	43	45	41	101	15
PLR0300E21	300	21	23.5	30	43	45	41	101	15
PLR0300E00	300	BLANK	23.5	30	43	45	41	101	15
PLR0400E17	400	17	28.5	36.5	52	50	45	13	10
PLR0400E21	400	21	28.5	36.5	52	50	45	13	10
PLR0400E00	400	BLANK	28.5	36.5	52	50	45	13	10
PLR0500E17	500	17	30	39	56	58	52	130	5
PLR0500E21	500	21	30	39	56	58	52	130	5
PLR0500E00	500	BLANK	30	39	56	58	52	130	5
PLR0630E17	630	17	35	45	65	68	56	148	5
PLR0630E21	630	21	35	45	65	68	56	148	5
PLR0630E27	630	27	35	45	65	68	56	148	5
PLR0630E00	630	BLANK	35	45	65	68	56	148	5
PLR0800E17	800	17	39	50.6	72	77	78	175	1
PLR0800E21	800	21	39	50.6	72	77	78	175	1
PLR0800E00	800	BLANK	39	50.6	72	77	78	175	1
PLR1000E17	1000	17	43	56.2	80	90	90	200	1
PLR1000E21	1000	21	43	56.2	80	90	90	200	1
PLR1000E27	1000	27	43	56.2	80	90	90	200	1
PLR1000E00	1000	BLANK	43	56.2	80	90	90	200	1
PLR1200E27	1200	27	46	60.4	87	90	100	210	1
PLR1200E00	1200	BLANK	46	60.4	87	90	100	210	1



## CABLE COPPER LUGS - LONG BARREL, HEAVY DUTY

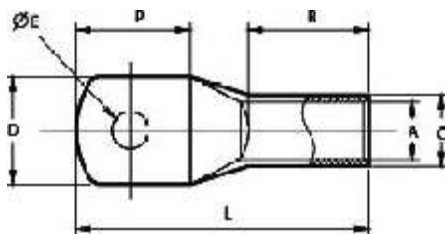
Material : E - Copper  
 Finish : Electro - Tinned  
 Features : With Inspection Hole



PART NO.	CABLE mm <sup>2</sup>	Ø E	DIMENSIONS IN MM						PER BOX
			A	C	D	P	B	L	
PLH0001E04	1.5	4.2	1.8	3.7	8	9	7	18	2000
PLH0001E05	1.5	5.2	1.8	3.7	9	10	7	19	2000
PLH0001E06	1.5	6.2	1.8	3.7	9	11	7	20	2000
PLH0002E03	2.5	3.2	2.4	4	8	9	7	18	2000
PLH0002E04	2.5	4.2	2.4	4	8	9	7	18	2000
PLH0002E05	2.5	5.2	2.4	4	8	10	7	18	2000
PLH0002E06	2.5	6.2	2.4	4	10	12	7	20	2000
PLH0002E08	2.5	8.2	2.4	4	11	16	9	26	2000
PLH0004E04	4	4.2	3.1	4.8	11	12	9	22	2000
PLH0004E05	4	5.2	3.1	4.8	11	12	9	22	2000
PLH0004E06	4	6.2	3.1	4.8	11	12	9	22	2000
PLH0004E08	4	8.2	3.1	4.8	11	16	11	29	2000
PLH0006E04	6	4.2	3.8	5.5	10	11	12	26	1000
PLH0006E05	6	5.2	3.8	5.5	10	11	12	26	1000
PLH0006E06	6	6.2	3.8	5.5	10	11	12	26	1000
PLH0006E08	6	8.2	3.8	5.5	12	16	12	31	1000
PLH0006E10	6	10.5	3.8	5.5	17	23	12	39	1000
PLH0010E05	10	5.2	4.5	6.9	12	14	11	28	1000
PLH0010E06	10	6.2	4.5	6.9	12	14	11	28	1000
PLH0010E08	10	8.2	4.5	6.9	12	16	11	30	1000
PLH0010E10	10	10.5	4.5	6.9	17	20	11	35	1000
PLH0010E13	10	13	4.5	6.9	17	24	11	38	1000
PLH0016E05	16	5.2	5.9	8	12	15	20	39	500
PLH0016E06	16	6.2	5.9	8	12	15	20	39	500
PLH0016E08	16	8.2	5.9	8	12	15	20	39	500
PLH0016E10	16	10.5	5.9	8	17	26	20	50	500
PLH0016E13	16	13	5.9	8	17	26	20	50	500
PLH0025E06	25	6.2	7	9.7	14	16	23	42	300
PLH0025E08	25	8.2	7	9.7	14	16	23	42	300
PLH0025E10	25	10.5	7	9.7	19	23	23	50	300
PLH0025E13	25	13	7	9.7	19	23	23	50	300
PLH0035E06	35	6.2	8.4	11.5	16	19	23	46	200
PLH0035E08	35	8.2	8.4	11.5	16	19	23	46	200
PLH0035E10	35	10.5	8.4	11.5	16	19	23	46	200
PLH0035E13	35	13	8.4	11.5	19	27	23	53	200
PLH0035E17	35	17	8.4	11.5	24	35	23	63	200
PLH0050E06	50	6.2	9.5	12.7	18	20	23	49	150
PLH0050E08	50	8.2	9.5	12.7	18	20	23	49	150
PLH0050E10	50	10.5	9.5	12.7	18	20	23	49	150
PLH0050E13	50	13	9.5	12.7	18	20	23	49	150
PLH0050E17	50	17	9.5	12.7	22	26	23	55	150
PLH0070E06	70	6.2	11	14.3	20	23	24	54	100
PLH0070E08	70	8.2	11	14.3	20	23	24	54	100
PLH0070E10	70	10.5	11	14.3	20	23	24	54	100
PLH0070E13	70	13	11	14.3	20	23	24	54	100
PLH0070E14	70	14	11	14.3	25	33	24	64	100
PLH0070E17	70	17	11	14.3	25	33	24	64	100
PLH0070E21	70	21	11	14.3	28	44	24	77	100

# CABLE COPPER LUGES - LONG BARREL, HEAVY DUTY

Material : E - Copper  
 Finish : Electro - Tinned  
 Features : With Inspection Hole

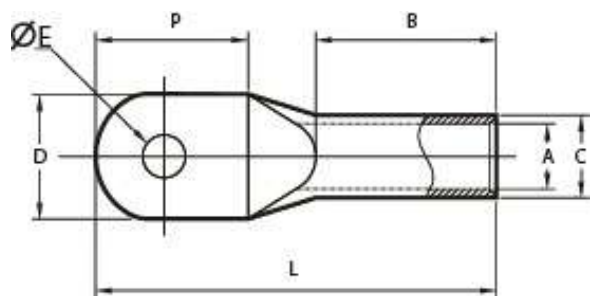


PART NO.	CABLE mm <sup>2</sup>	Ø E	DIMENSIONS IN MM						PER BOX
			A	C	D	P	B	L	
PLH0095E06	95	6.2	13.5	17.5	25	27	25	60	75
PLH0095E08	95	8.2	13.5	17.5	25	27	25	60	75
PLH0095E10	95	10.5	13.5	17.5	25	27	25	60	75
PLH0095E13	95	13	13.5	17.5	25	27	25	60	75
PLH0095E14	95	14.7	13.5	17.5	25	27	25	60	75
PLH0095E17	95	17	13.5	17.5	25	33	25	65	75
PLH0120E08	120	8.2	15.5	20.6	29	29	32	70	50
PLH0120E10	120	10.5	15.5	20.6	29	29	32	70	50
PLH0120E13	120	13	15.5	20.6	29	29	32	70	50
PLH0120E14	120	14.7	15.5	20.6	29	29	32	70	50
PLH0120E17	120	17	15.5	20.6	29	32	32	75	50
PLH0120E21	120	21	15.5	20.6	29	40	32	84	50
PLH0150E10	150	10.5	16.3	22.2	31	34	32	78	40
PLH0150E13	150	13	16.3	22.2	31	34	32	78	40
PLH0150E14	150	14.7	16.3	22.2	31	34	32	78	40
PLH0150E17	150	17	16.3	22.2	31	34	32	78	40
PLH0150E21	150	21	16.3	22.2	31	34	32	78	40
PLH0185E13	185	13	18.3	24.3	34	35	32	82	30
PLH0185E14	185	14	18.3	24.3	34	35	32	82	30
PLH0185E17	185	17	18.3	24.3	34	35	32	82	30
PLH0185E21	185	21	18.3	24.3	34	35	32	82	30
PLH0240E10	240	10.5	21.2	28.6	40	41	42	99	20
PLH0240E13	240	13	21.2	28.6	40	41	42	99	20
PLH0240E14	240	14	21.2	28.6	40	41	42	99	20
PLH0240E17	240	17	21.2	28.6	40	41	42	99	20
PLH0240E21	240	21	21.2	28.6	40	41	42	99	20
PLH0240E00	240	BLANK	21.2	28.6	40	41	42	99	20
PLH0300E13	300	13	23.8	31.9	45	45	47	107	15
PLH0300E14	300	14	23.8	31.9	45	45	47	107	15
PLH0300E17	300	17	23.8	31.9	45	45	47	107	15
PLH0300E21	300	21	23.8	31.9	45	45	47	107	15
PLH0300E00	300	BLANK	23.8	31.9	45	45	47	107	15
PLH0400E17	400	17	26.8	34.8	49	51	48	116	10
PLH0400E21	400	21	26.8	34.8	49	51	48	116	10
PLH0400E00	400	BLANK	26.8	34.8	49	51	48	116	10
PLH0500E17	500	17	30	38	55	60	50	130	5
PLH0500E21	500	21	30	38	55	60	50	130	5
PLH0500E00	500	BLANK	30	38	55	60	50	130	5
PLH0630E17	630	17	33.5	45	64	65	57	146	5
PLH0630E21	630	21	33.5	45	64	65	57	146	5
PLH0630E27	630	27	33.5	45	64	65	57	146	5
PLH0630E00	630	BLANK	33.5	45	64	65	57	146	5
PLH0800E17	800	17	39	50.6	72	77	78	176	1
PLH0800E21	800	21	39	50.6	72	77	78	176	1
PLH0800E00	800	BLANK	39	50.6	72	77	78	176	1
PLH1000E17	1000	17	43	56.2	80	90	90	200	1
PLH1000E21	1000	21	43	56.2	80	90	90	200	1
PLH1000E27	1000	27	43	56.2	80	90	90	200	1
PLH1000E00	1000	BLANK	43	56.2	80	90	90	200	1

Material : E - Copper

Finish : Electro - Tinned

Features : With or without Inspection Hole



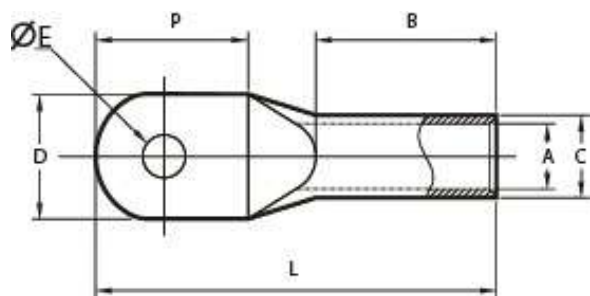
PART NO.	CABLE mm <sup>2</sup>	Ø E	DIMENSIONS IN MM						PER BOX
			A	C	D	P	B	L	
PLN0006E05	6	5.2	3.8	5.5	10	14	9	28	1000
PLN0006E06	6	6.5	3.8	5.5	10	14	9	28	1000
PLN0010E05	10	5.2	4.5	6.2	11	15	9	28	1000
PLN0010E06	10	6.5	4.5	6.2	11	15	9	28	1000
PLN0010E10	10	10.5	4.5	6.2	16	25	12	43	1000
PLN0016E06	16	6.2	5.5	7	12	16	12	36	500
PLN0016E08	16	8.2	5.5	7	12	16	12	36	500
PLN0016E10	16	10.5	5.5	7	16	24	12	43	500
PLN0016E13	16	13	5.5	7	16	24	12	43	500
PLN0025E06	25	6.2	6.8	8.8	13	16	12	37	300
PLN0025E08	25	8.2	6.8	8.8	13	16	12	37	300
PLN0025E10	25	10.5	6.8	8.8	16	25	12	43	300
PLN0025E13	25	13	6.8	8.8	18	25	12	43	300
PLN0035E06	35	6.2	8.2	10.5	15	20	18	43	200
PLN0035E08	35	8.2	8.2	10.5	15	20	18	43	200
PLN0035E10	35	10.5	8.2	10.5	15	20	18	43	200
PLN0035E13	35	13	8.2	10.5	17	26	18	50	200
PLN0050E06	50	6.2	9.5	12.4	18	23	16	49	150
PLN0050E08	50	8.2	9.5	12.4	18	23	16	49	150
PLN0050E10	50	10.5	9.5	12.4	18	23	16	49	150
PLN0050E13	50	13	9.5	12.4	18	23	16	49	150
PLN0070E08	70	8.2	11.2	14.7	21	25	20	55	100
PLN0070E10	70	10.5	11.2	14.7	21	25	20	55	100
PLN0070E13	70	13	11.2	14.7	21	25	20	55	100
PLN0070E14	70	14	11.2	14.7	21	25	20	55	100
PLN0095E10	95	10.5	13.5	17.4	25	27	23	62	75
PLN0095E13	95	13	13.5	17.4	25	27	23	62	75
PLN0095E14	95	14	13.5	17.4	25	27	23	62	75
PLN0095E17	95	17	13.5	17.4	25	33	23	68	75

## CABLE COPPER LUGES - N SERIES

Material : E - Copper

Finish : Electro - Tinned

Features : With or without Inspection Hole



PART NO.	CABLE mm <sup>2</sup>	Ø E	DIMENSIONS IN MM						PER BOX
			A	C	D	P	B	L	
PLN0123E10	120	10.5	15	19.4	28	28	28	72	50
PLN0123E13	120	13	15	19.4	28	28	28	72	50
PLN0123E14	120	14	15	19.4	28	28	28	72	50
PLN0123E17	120	17	15	19.4	28	28	28	72	50
PLN0123E21	120	21	15	19.4	28	33	28	77	50
PLN0150E10	150	10.5	16.5	21	30	32	30	75	40
PLN0150E13	150	13	16.5	21	30	32	30	75	40
PLN0150E17	150	17	16.5	21	30	32	30	75	40
PLN0150E21	150	21	16.5	21	30	32	30	75	40
PLN0185E10	185	10.5	18.5	23.5	34	38	31	85	30
PLN0185E13	185	13	18.5	23.5	34	38	31	85	30
PLN0185E14	185	14	18.5	23.5	34	38	31	85	30
PLN0185E17	185	17	18.5	23.5	34	38	31	85	30
PLN0185E21	185	21	18.5	23.5	34	38	31	85	30
PLN0240E13	240	13	21	26.5	38	43	35	95	20
PLN0240E17	240	17	21	26.5	38	43	35	95	20
PLN0240E21	240	21	21	26.5	38	43	35	95	20
PLN0300E17	300	17	23.5	30	43	47	44	110	15
PLN0300E21	300	21	23.5	30	43	47	44	110	15
PLN0400E17	400	17	28.5	36.5	52	48	40	112	10
PLN0400E32	400	21	28.5	36.5	52	48	40	112	10
PLN0500E17	500	17	30	37	55	50	75	148	5
PLN0500E21	500	21	30	37	55	50	75	148	5
PLN0630E17	630	17	34	41	60	50	70	148	5
PLN0630E21	630	21	34	41	60	50	70	148	5

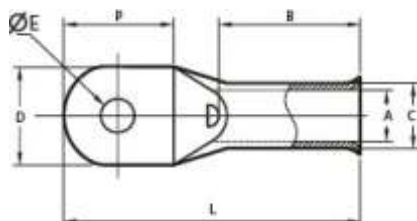
## CABLE COPPER LUGES - BELL MOUTH

Material : E - Copper

Finish : Electro - Tinned

Features : With or without Inspection Hole Bell Mouth Entry

Application : For Stranded to Fine Stranded Copper Cable



PART NO.	CABLE mm <sup>2</sup>	Ø E	DIMENSIONS IN MM						PER BOX
			A	C	D	P	B	L	
PLB0010E05	10	5.2	4.4	6.9	11	11	10	29	500
PLB0010E06	10	6.5	4.4	6.9	11	11	10	29	500
PLB0010E08	10	8.2	4.4	6.9	12	18	11	38	500
PLB0010E10	10	10.5	4.4	6.9	17	24	11	41	500
PLB0010E13	10	13	4.4	6.9	17	24	11	41	500
PLB0016E05	16	5.2	5.6	8	11	11	11	29	500
PLB0016E06	16	6.2	5.6	8	11	11	11	29	500
PLB0016E08	16	8.2	5.6	8	11	18	11	38	500
PLB0016E10	16	10.5	5.6	8	18	22	11	42	300
PLB0016E13	16	13	5.6	8	18	22	11	42	300
PLB0025E06	25	6.2	7	9.5	13	19	14	42	200
PLB0025E08	25	8.2	7	9.5	13	19	14	42	200
PLB0025E10	25	10.5	7	9.5	16	23	14	47	200
PLB0025E13	25	13	7	9.5	18	23	14	47	200
PLB0035E06	35	6.2	8.2	11	16	19	15	43	200
PLB0035E08	35	8.2	8.2	11	16	19	15	43	200
PLB0035E10	35	10.5	8.2	11	18	22	15	48	200
PLB0035E13	35	13	8.2	11	18	22	15	48	200
PLB0035E14	35	14	8.2	11	20	24	15	50	200
PLB0050E06	50	6.2	9.5	12.1	18	18	18	48	150
PLB0050E08	50	8.2	9.5	12.1	18	18	18	48	150
PLB0050E10	50	10.5	9.5	12.1	18	22	18	52	150
PLB0050E13	50	13	9.5	12.1	18	22	18	52	150
PLB0050E14	50	14	9.5	12.1	20	27	18	55	100
PLB0050E17	50	17	9.5	12.1	22	27	18	55	100
PLB0070E06	70	6.2	11.5	15	21	20	19	50	75
PLB0070E08	70	8.2	11.5	15	21	20	19	50	75
PLB0070E10	70	10.5	11.5	15	21	22	19	54	75
PLB0070E13	70	13	11.5	15	21	22	19	54	75
PLB0070E14	70	14	11.5	15	21	22	19	68	75
PLB0070E17	70	17	11.5	15	24	34	19	68	75
PLB0095E08	95	8.2	13.5	17	25	24	24	60	50
PLB0095E10	95	10.5	13.5	17	25	24	24	60	50
PLB0095E13	95	13	13.5	17	25	24	24	60	50
PLB0095E14	95	14	13.5	17	25	24	24	60	50
PLB0095E17	95	17	13.5	17	25	32	24	67	50
PLB0120E10	120	10.5	15	19	28	29	29	72	40
PLB0120E13	120	13	13.5	17	28	29	29	72	40
PLB0120E14	120	14	13.5	17	28	29	29	72	40
PLB0120E17	120	17	13.5	17	28	29	29	72	40
PLB0120E21	120	21	13.5	17	30	33	29	76	40





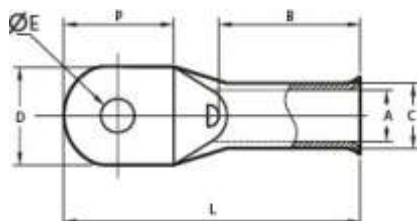
## CABLE COPPER LUGS - BELL MOUTH

Material : E - Copper

Finish : Electro - Tinned

Features : With or without Inspection Hole Bell Mouth Entry

Application : For Stranded to Fine Stranded Copper Cable

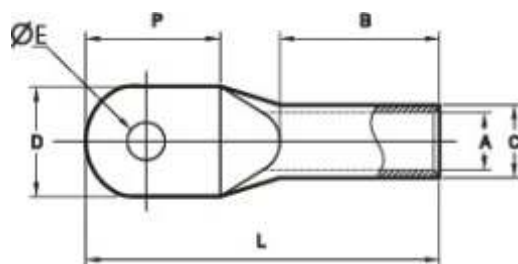


PART NO.	CABLE mm <sup>2</sup>	Ø E	DIMENSIONS IN MM						PER BOX
			A	C	D	P	B	L	
PLB0150E10	150	10.5	16.5	21	30	32	30	74	30
PLB0150E13	150	13	16.5	21	30	32	30	74	30
PLB0150E14	150	14	16.5	21	30	32	30	74	30
PLB0150E17	150	17	16.5	21	30	32	30	74	30
PLB0150E21	150	21	16.5	21	30	32	30	74	30
PLB0185E10	185	10.5	18.5	23.4	34	37	32	85	25
PLB0185E13	185	13	18.5	23.4	34	37	32	85	25
PLB0185E14	185	14	18.5	23.4	34	37	32	85	25
PLB0185E17	185	17	18.5	23.4	34	37	32	85	25
PLB0185E21	185	21	18.5	23.4	34	37	32	85	25
PLB0240E10	240	10.5	21	26	38	42	36	93	15
PLB0240E13	240	13	21	26	38	42	36	93	15
PLB0240E14	240	14	21	26	38	42	36	93	15
PLB0240E17	240	17	21	26	38	42	36	93	15
PLB0240E21	240	21	21	26	38	42	36	93	15
PLB0300E10	300	10.5	23	28	40	47	44	110	10
PLB0300E13	300	13	23	28	40	47	44	110	10
PLB0300E14	300	14	23	28	40	47	44	110	10
PLB0300E17	300	17	23	28	40	47	44	110	10
PLB0300E21	300	21	23	28	40	47	44	110	10
PLB0400E13	400*	13	27	36	51	48	44	111	5
PLB0400E14	400*	14	27	36	51	48	44	111	5
PLB0400E17	400*	17	27	36	51	48	44	111	5
PLB0400E21	400*	21	27	36	51	48	44	111	5
PLB0500E10	500*	10.5	30	38.1	55	50	56	127	5
PLB0500E13	500*	13	30	38.1	55	50	56	127	5
PLB0500E14	500*	14	30	38.1	55	50	56	127	5
PLB0500E17	500*	17	30	38.1	55	50	56	127	5
PLB0500E21	500*	21	30	38.1	55	50	56	127	5
PLB0630E10	630*	10.5	34	44	62	52	50	130	5
PLB0630E13	630*	13	34	44	62	52	50	130	5
PLB0630E14	630*	14	34	44	62	52	50	130	5
PLB0630E17	630*	17	34	44	62	52	50	130	5
PLB0630E21	630*	21	34	44	62	52	50	130	5
PLB0800E21	800*	21	38	49	70	68	56	164	1
PLB0800E27	800*	27	38	49	70	68	56	164	1
PLB1000E21	1000*	21	42.5	53	77	68	56	169	1
PLB1000E27	1000*	27	42.5	53	77	68	56	169	1

Material : E - Copper

Finish : Electro - Tinned

Features : Without Inspection Hole



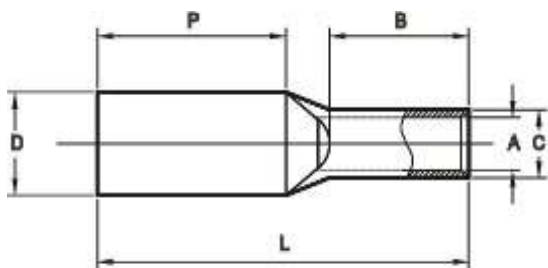
PART NO.	CABLE mm <sup>2</sup>	Ø E	DIMENSIONS IN MM						PER BOX
			A	C	D	P	B	L	
PPS0016E13	16	13	5.9	8	20	24	34	65	120
PPS0016E00	16	BLANK	5.9	8	20	24	34	65	120
PPS0025E13	25	13	7	9.7	18	21	41	69	100
PPS0025E00	25	BLANK	7	9.7	18	21	41	69	100
PPS0035E13	35	13	8.4	11.5	22	25	41	75	100
PPS0035E00	35	BLANK	8.4	11.5	22	25	41	75	100
PPS0050E13	50	13	9.5	12.7	22	27	41	78	75
PPS0050E00	50	BLANK	9.5	12.7	22	27	41	78	75
PPS0070E13	70	13	11.1	14.3	21	25	47	80	75
PPS0070E00	70	BLANK	11.1	14.3	28	45	47	101	75
PPS0095E13	95	13	13.5	17.5	26	31	47	89	50
PPS0095E00	95	BLANK	13.5	17.5	26	31	47	89	50
PPS0120E13	120	13	15.5	20.6	29	33	62	104	30
PPS0120E00	120	BLANK	15.5	20.6	29	33	62	104	30
PPS0150E13	150	13	16.3	22.2	33	32	62	112	25
PPS0150E17	150	17	16.3	22.2	33	38	62	118	25
PPS0150E00	150	BLANK	16.3	22.2	33	38	62	118	25
PPS0185E13	185	13	18.3	24.3	35	32	62	112	20
PPS0185E17	185	17	18.3	24.3	35	35	62	118	20
PPS0185E00	185	BLANK	18.3	24.3	35	35	62	118	20
PPS0240E13	240	13	21.2	28.6	40	42	77	144	10
PPS0240E17	240	17	21.2	28.6	40	42	77	144	10
PPS0240E00	240	BLANK	21.2	28.6	40	42	77	144	10
PPS0300E17	300	17	23.8	31.9	45	50	88	163	5
PPS0300E21	300	21	23.8	31.9	45	50	88	163	5
PPS0300E00	300	BLANK	23.8	31.9	45	50	88	163	5
PPS0400E17	400	17	26.8	34.8	49	50	88	163	3
PPS0400E21	400	21	26.8	34.8	49	50	88	163	3
PPS0400E00	400	BLANK	26.8	34.8	49	50	88	163	3
PPS0500E17	500	17	30	38	55	50	88	167	1
PPS0500E21	500	21	30	38	55	50	88	167	1
PPS0500E00	500	BLANK	30	38	55	50	88	167	1
PPS0630E17	630	17	33.5	46	63	55	100	192	1
PPS0630E21	630	21	33.5	45	63	55	100	192	1
PPS0630E00	630	BLANK	33.5	45	63	55	100	192	1

## COMPRESSION CABLE LUGS - LONG PALM

Material : E - Copper

Finish : Electro - Tinned

Features : With or Without Inspection Hole



PART NO.	CABLE mm <sup>2</sup>	Ø E	DIMENSIONS IN MM						PER BOX
			A	C	D	P	B	L	
PPL0010E00	10	BLANK	4.5	6.9	20	67	11	82	150
PPL0016E00	16	BLANK	5.9	8.1	20	67	20	91	150
PPL0025E00	25	BLANK	7	9.7	18	66	22	95	100
PPL0035E00	35	BLANK	8.4	11.5	18	71	22	97	75
PPL0050E00	50	BLANK	9.5	12.7	22	71	22	99	50
PPL0070E00	70	BLANK	11.1	14.3	28	88	25	120	40
PPL0095E00	95	BLANK	13.5	17.5	26	74	25	106	30
PPL0120E00	120	BLANK	15.5	20.6	29	74	32	113	20
PPL0150E00	150	BLANK	16.3	22.2	33	82	32	122	15
PPL0185E00	185	BLANK	18.3	24.3	35	82	32	122	10
PPL0240E00	240	BLANK	21.2	28.6	40	86	42	145	8
PPL0300E00	300	BLANK	23.8	31.9	45	94	47	160	5
PPL0400E00	400	BLANK	26.8	34.8	49	94	50	164	5
PPL0500E00	500	BLANK	30	38	55	94	50	164	5
PPL0630E00	630	BLANK	33.5	45	63	98	55	173	2

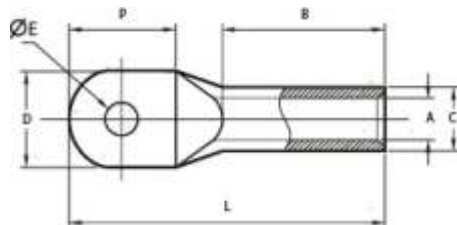
## CABLE LUGS - DIN 46235

Standard : DIN 46235

Material : E - Copper

Finish : Electro - Tinned

Features : With Inspection Hole



PART NO.	CABLE mm <sup>2</sup>	Ø E	DIMENSIONS IN MM						PER BOX
			A	C	D	P	B	L	
PLD0010E06	10	6.4	4.5	7	9	16	10	35	400
PLD0010E08	10	8.4	4.5	7	13	20	10	37	400
PLD0016E06	16	6.4	5.5	8.5	13	15.5	20	44	150
PLD0016E08	16	8.4	5.5	8.5	13	20	20	46	150
PLD0025E06	25	6.4	7	10	14	15.5	20	46	150
PLD0025E08	25	8.4	7	10	16	20	20	48	150
PLD0035E08	35	8.4	8.2	12.5	17	20	20	54	100
PLD0035E10	35	10.5	8.2	12.5	19	24	20	54	100
PLD0035E13	35	13	8.2	12.5	21	26	20	54	100
PLD0050E08	50	8.4	10	14.5	20	20	28	64	75
PLD0050E10	50	10.5	10	14.5	22	24	28	64	75
PLD0050E13	50	13	10	14.5	24	26	28	64	75
PLD0070E08	70	8.4	11.5	16.5	24	20	28	67	50
PLD0070E10	70	10.5	11.5	16.5	24	24	28	67	50
PLD0070E13	70	13	11.5	16.5	24	26	28	67	50
PLD0095E10	95	10.5	13.5	19	28	24	35	78	50
PLD0095E13	95	13	13.5	19	28	26	35	78	50
PLD0095E10	120	10.5	15.5	21	32	31	35	85	25
PLD0120E13	120	13	15.5	21	32	33	35	85	25
PLD0120E17	120	17	15.5	21	32	39	35	85	25
PLD0150E10	150	10.5	17	23.5	34	31	35	94	25
PLD0150E13	150	13	17	23.5	34	33	35	94	25
PLD0150E17	150	17	17	23.5	34	39	35	97	25
PLD0185E10	185	10.5	19	25.5	37	31	40	98	20
PLD0185E13	185	13	19	25.5	37	33	40	98	20
PLD0185E17	185	17	19	25.5	37	39	40	101	20
PLD0240E13	240	13	21.5	29	42	33	40	108	10
PLD0240E17	240	17	21.5	29	42	39	40	111	10
PLD0240E21	240	21	21.5	29	42	43	40	113	10
PLD0300E17	300	17	24.5	31	48	40	50	122	10
PLD0300E21	300	21	24.5	31	48	40	50	122	10
PLD0400E17	400	17	27.5	38.5	54	50	70	140	5
PLD0400E21	400	21	27.5	38.5	54	50	70	140	5
PLD0500E17	500	17	31	42	60	50	70	150	5
PLD0500E21	500	21	31	42	60	50	70	150	5
PLD0630E17	630	17	34	44	62	50	80	160	5
PLD0630E21	630	21	34	44	62	50	80	160	5
PLD0800E21	800	21	40	52	75	60	100	195	1
PLD0800E27	800	27	40	52	75	60	100	195	1
PLD1000E21	1000	21	44	58	85	60	100	195	1
PLD1000E27	1000	27	44	58	85	60	100	195	1

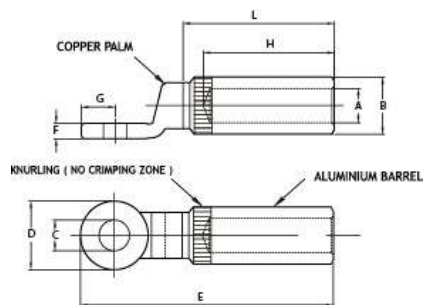
## CABLE LUGS - BIMETALLIC

Material : E - Copper & AL

Finish : Bright

Features : Barrel prefilled with oxide inhibiting compound & capped at the end

Applications : Used for connecting aluminium cable to copper busbars



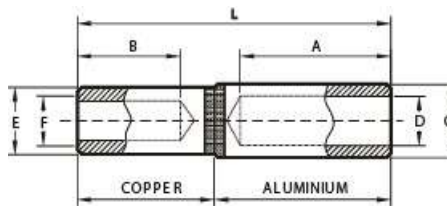
PART NO.	CABLE mm <sup>2</sup>	Ø E	DIMENSIONS IN MM									PER BOX
			A	B	C	D	E	F	G	H	L	
PBML1608	16	8.5	5.5	16	8.5	20	79	4	10	42	49	25
PBML1610	16	10.5	5.5	16	10.5	25	87	5	12.5	42	49	25
PBML1613	16	13	5.5	16	13	25	87	5	12.5	42	49	25
PBML2508	25	8.5	6.5	16	8.5	20	79	4	10	42	49	25
PBML2510	25	10.5	6.5	16	10.5	25	87	5	12.5	42	49	25
PBML2513	25	13	6.5	16	13	25	87	5	12.5	42	49	25
PBML3508	35	8.5	8	16	8.5	20	79	4	10	42	49	20
PBML3510	35	10.5	8	16	10.5	25	87	5	12.5	42	49	20
PBML3553	35	13	8	16	13	25	87	5	12.5	42	49	20
PBML5008	50	8.5	9	20	8.5	20	79	4	10	42	49	20
PBML5010	50	10.5	9	20	10.5	25	87	5	12.5	42	49	20
PBML5013	50	13	9	20	13	25	87	5	12.5	42	49	20
PBML7008	70	8.5	11	20	8.5	20	79	4	10	42	49	20
PBML7010	70	10.5	11	20	10.5	25	87	5	12.5	42	49	20
PBML703	70	13	11	20	13	25	87	5	12.5	42	49	20
PBML9508	95	8.5	12.5	20	8.5	20	79	4	10	42	49	20
PBML9510	95	10.5	12.5	20	10.5	25	87	5	12.5	42	49	20
PBML9513	95	13	12.5	20	13	25	87	5	12.5	42	49	20
PBML1210	120	10.5	15	25	10.5	30	112	7	15	58	67	15
PBML1213	120	13	15	25	13	30	112	7	15	58	67	15
PBML1217	120	17	15	25	17	35	117	7	17.5	58	67	15
PBML1510	150	10.5	16	25	10.5	30	112	7	15	58	67	15
PBML1513	150	13	16	25	13	30	112	7	15	58	67	15
PBML1517	150	17	16	25	17	35	117	7	17.5	58	67	15
PBML1810	185	10.5	17	32	10.5	30	112	7	15	58	67	15
PBML1813	185	13	17	32	13	30	112	7	15	58	67	15
PBML18177	185	17	17	32	17	35	117	7	17.5	58	67	15
PBML2410	240	10.5	20	32	10.5	30	112	7	15	58	67	10
PBML2413	240	13	20	32	13	30	112	7	15	58	67	10
PBML2417	240	17	20	32	17	35	117	7	17.5	58	67	10
PBML3010	300	10.5	23.3	34	10.5	30	118	7	15	68	73	10
PBML3013	300	13	23.3	34	13	30	118	7	15	68	73	10
PBML3017	300	17	23.3	34	17	35	123	7	17.5	68	73	10
PBML4017	400	17	26	40	17	35	137	7	17.5	78	87	5
PBML4000	400	BLANK	26	40	-	35	137	7	-	78	87	5
PBML5017	500	17	29.1	47	17	30 x 50	184	10	30	94	115	3
PBML5000	500	BLANK	29.1	47	-	30 x 50	204	10	-	94	115	3
PBML6317	630	17	32.5	47	17	30 x 50	184	10	30	94	115	3
PBML6300	630	BLANK	32.5	47	-	30 x 50	204	10	-	94	115	3

## BIMETALLIC JOINTS - STRAIGHT TYPE

Material : E - Copper & AL

Finish : Bright

Features : Barrel prefilled with oxide inhibiting compound & capped at the end



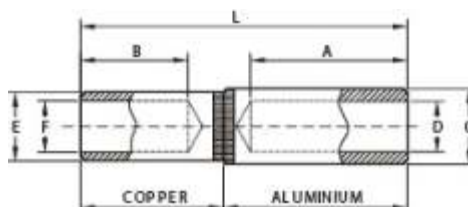
PART NO.	CABLE (AL) mm <sup>2</sup>	CABLE (CU) mm <sup>2</sup>	DIMENSIONS IN MM							PER BOX
			A	B	C	D	E	F	L	
PBMS2525	25	25	32	21.5	12	7	9.7	7	70	25
PBMS3535	35	35	32	21.5	12	8.5	11.5	8.4	70	20
PBMS5050	50	50	32	21.	16	9.5	12.7	9.5	70	20
PBMS7070	70	70	32	21.5	16	11	14.3	11.1	70	20
PBMS9595	95	95	60	40	21.5	13	17.5	13.5	120	15
PBMS1212	120	120	60	40	21.5	15	20.6	15.5	120	15
PBMS1515	150	150	60	40	27	16.5	22.22	16.3	120	15
PBMS1818	185	185	60	40	27	18.5	24.3	18.3	120	15
PBMS2424	240	240	60	40	35	21	28.6	21.2	122	10
PBMS3030	300	300	60	40	35	23.5	31.9	23.8	125	10
PBMS4040	400	400	70	55	47	26.5	34.9	26.8	153	5
PBMS5050	500	500	70	58	47	29.5	38	30	155	5
PBMS6363	630	630	70	60	54	33.5	45	33.5	160	2

## BIMETALLIC JOINTS - REDUCER TYPE

Material : E - Copper & AL

Finish : Bright

Features : Barrel prefilled with oxide inhibiting compound & capped at the end



PART NO.	CABLE (AL) mm <sup>2</sup>	CABLE (CU) mm <sup>2</sup>	DIMENSIONS IN MM							PER BOX
			A	B	C	D	E	F	L	
PBMR353525	35	25	32	21.5	12	8.5	9.7	7	70	25
PBMR5035	50	35	32	21.5	16	9.5	11.5	8.4	70	20
PBMR7050	70	50	32	21.5	16	11	12.7	9.5	70	20
PBMR9570	95	70	60	40	21.5	13	14.3	11.1	70	15
PBMR1270	120	70	60	40	21.5	15	14.3	11.5	120	15
PBMR1295	120	95	60	40	21.5	15	17.5	13.5	120	15
PBMR1512	150	120	60	40	27	16.5	20.6	15.3	120	15
PBMR1870	185	70	60	40	27	18.5	14.3	11.5	120	15
PBMR1815	185	150	60	40	27	18.5	22.2	16.3	120	15
PBMR2410	240	100	60	40	35	21	17.5	13.5	122	10
PBMR2418	240	185	60	40	35	21	24.3	18.3	122	10
PBMR3018	300	185	60	40	35	23.5	24.0	18.5	125	10
PBMR3024	300	240	60	40	35	23.5	28.6	21.2	125	10
PBMR4017	400	170	70	55	47	28.5	24.3	18.3	153	5
PBMR4030	400	300	70	55	47	26.5	31.9	23.8	153	5
PBMR5040	500	400	70	58	47	29.5	34.9	26.8	155	5
PBMR6350	630	500	70	60	54	33.5	38	30	160	2

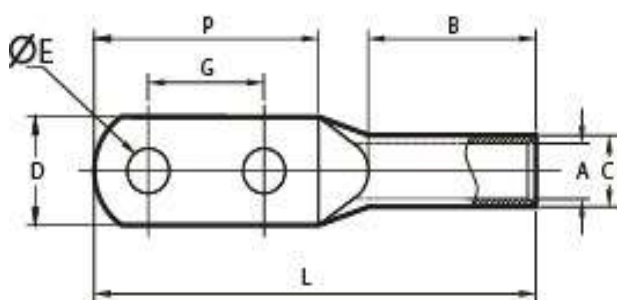


## CABLE LUGS WITH TWO HOLES

Material : E - Copper & AL

Finish : Electro 0 Tinned

Features : With or Without Inspection Hole

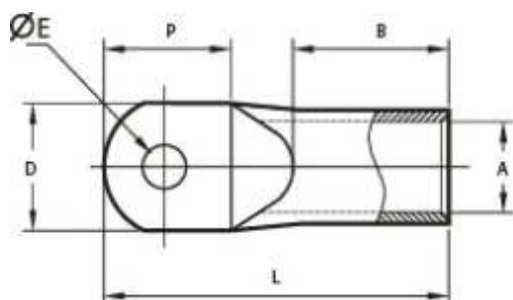


PART NO.	CABLE mm <sup>2</sup>	Ø E	DIMENSIONS IN MM							PER BOX
			A	B	C	G	P	B	L	
PTH0016E10	16	10.5	5.4	7.1	15	40	64	15	84	40
PTH0025E10	25	10.5	6.8	8.8	18	40	64	15	87	35
PTH0035E10	35	10.5	8.2	10.6	18	40	66	15	90	30
PTH0050E13	50	13	9.5	12.4	22.5	40	66	27.5	105	25
PTH0070E13	70	13	11.2	14.7	24	40	67	30	107	20
PTH0095E13	95	13	13.5	17.4	26	40	67	33	111	20
PTH0120E13	120	13	15	19.4	28	40	70	36	118	15
PTH0150E13	150	13	16.5	21.2	31	40	72	44	130	15
PTH0185E13	185	13	18.5	23.5	35	40	76	55	149	10
PTH0240E13	240	13	21	26.5	38	40	78	55	150	15
PTH0300E13	300	13	23.5	30	42	40	84	55	160	5
PTH0400E13	400	13	28.5	36.5	52	40	80	62	165	3
PTH0500E13	500	13	30	37	55	40	80	62	165	3
PTH0630E13	630	13	34	41	60	40	82	70	180	3
PTH0630E17	630	17	34	41	62	40	82	70	180	3

Material : E - Copper & AL

Finish : Electro 0 Tinned

Features : With or Without Inspection Hole



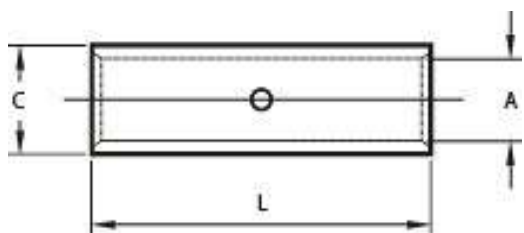
PART NO.	CABLE mm <sup>2</sup>	Ø E	DIMENSIONS IN MM					PER BOX
			A	D	P	B	L	
PPN0035E06	35	6.5	8.2	13	20	16	44	200
PPN0035E08	35	8.5	8.2	13	20	16	44	200
PPN0050E08	50	8.5	9.5	15	23	19	49	150
PPN0050E10	50	10.5	9.5	15	23	19	49	150
PPN0070E08	70	8.5	11.2	17.5	25	21	55	100
PPN0070E10	70	10.5	11.2	17.5	25	21	55	100
PPN0070E13	70	13	11.2	17.5	25	21	55	100
PPN0095E08	95	8.5	13.5	21	27	23	52	75
PPN0095E10	95	10.5	13.5	21	27	23	52	75
PPN0095E13	95	13	13.5	21	27	23	52	75
PPN0120E10	120	10.5	15.5	21	28	28	72	50
PPN0120E13	120	13	15.5	21	28	28	72	50
PPN0150E10	150	10.5	16.5	21	32	28	75	40
PPN0150E13	150	13	16.5	21	32	28	75	40
PPN0150E17	150	17	16.5	21	32	28	75	40
PPN0185E10	185	10.5	18.5	27	38	31	85	30
PPN0185E13	185	13	18.5	27	38	31	85	30
PPN0185E17	185	17	18.5	27	38	31	85	30
PPN0240E10	240	10.5	21.5	30	43	35	95	20
PPN0240E13	240	13	21.5	30	43	35	95	20
PPN0240E17	240	17	21.5	30	43	35	95	20
PPN0300E13	300	13	23.5	32	47	44	110	15
PPN0300E17	300	17	23.5	32	47	44	110	15

## CABLE JOINT - REGULAR BARREL

**Material** : E - Copper & AL

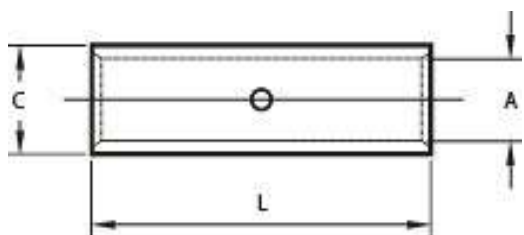
**Finish** : Electro 0 Tinned

**Features** : Cable stop facility



PART NO.	CABLE mm <sup>2</sup>	DIMENSIONS IN MM			PER BOX
		A	C	L	
PJR0001	1.5	1.8	3.7	12	2000
PJR0000	2.5	2.4	4	15	2000
PJR0004	4	3.1	4.8	15	2000
PJR0006	6	3.8	5.5	15	1000
PJR0010	10	4.5	6.2	20	1000
PJR0016	16	5.4	7.1	20	500
PJR0020	20	6.1	7.7	22	500
PJR0025	25	6.8	8.8	32	300
PJR0035	35	8.5	10.6	36	300
PJR0050	50	9.5	12.4	40	150
PJR0070	70	11.2	14.7	45	100
PJR0095	95	13.5	17.4	45	75
PJR0120	120	15	19.4	45	50
PJR0150	150	16.5	21.2	55	40
PJR0185	185	18.5	23.5	60	30
PJR0240	240	21	26.5	80	20
PJR0300	300	23.5	30	85	15
PJR0400	400	28.5	36.5	85	10
PJR0500	500	30	39	100	5
PJR0630	630	35	45	110	5
PJR0800	800	39	50.6	150	1
PJR1000	1000	43	56.2	170	1

**Material** : E - Copper & AL  
**Finish** : Electro 0 Tinned  
**Features** : Cable stop facility  
**Standard** : DIN 46267, Part 1



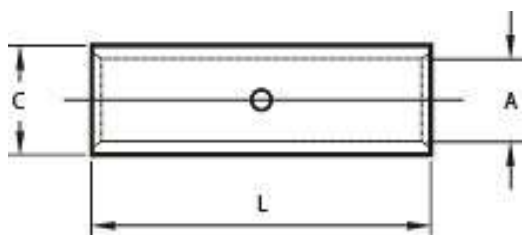
PART NO.	CABLE mm <sup>2</sup>	DIMENSIONS IN MM			PER BOX
		A	C	L	
PJH0006	6	3.8	5.5	30	750
PJH0010	10	4.5	6	30	750
PJH0016	16	5.5	8.5	50	200
PJH0025	25	7	10	50	150
PJH0035	35	8.2	12.5	50	75
PJH0050	50	10	14.5	56	60
PJH0070	70	11.5	16.5	56	50
PJH0095	95	13.5	19	70	30
PJH0120	120	15.5	21	70	25
PJH0150	150	17	25.5	80	20
PJH0185	185	19	25.5	85	15
PJH0240	240	21.5	29	90	10
PJH0300	300	24.5	32	100	10
PJH0400	400	27.5	38.5	150	3
PJH0500	500	31	42	160	2
PJH0630	630	34	44	160	2
PJH0800	800	40	52	200	1
PJH1000	1000	44	58	200	1

## CABLE JOINT - LONG BARREL

**Material** : E - Copper

**Finish** : Electro 0 Tinned

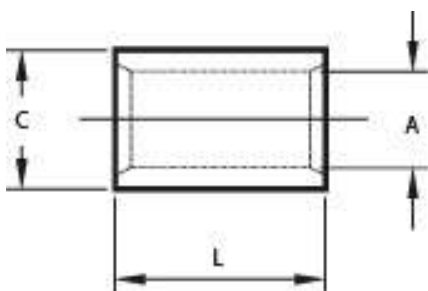
**Features** : Cable stop facility



PART NO.	CABLE mm <sup>2</sup>	DIMENSIONS IN MM			PER BOX
		A	C	L	
PJL0001	1.5	1.8	3.7	22	2000
PJL0002	2.5	2.4	4	22	2000
PJL0004	4	3.1	4.8	22	2000
PJL0006	6	3.8	5.5	22	1000
PJL0010	10	4.5	6.2	22	1000
PJL0016	16	5.4	7.1	35	500
PJL0020	20	6.1	7.7	35	500
PJL0025	25	6.8	8.8	35	300
PJL0035	35	8.2	10.6	47	200
PJL0050	50	9.5	12.4	47	150
PJL0070	70	11.2	14.7	50	100
PJL0095	95	13.5	17.4	50	75
PJL0120	120	15	19.4	65	50
PJL0150	150	16.5	21.2	65	40
PJL0185	185	18.5	23.5	65	30
PJL0240	240	21	26.5	89	20
PJL0300	300	23.5	30	89	15
PJL0400	400	28.5	36.5	90	10
PJL0500	500	30	39	115	5
PJL0630	630	35	45	115	5
PJL0800	800	39	50.6	200	1
PJL1000	1000	43	56.2	230	1

**Material** : E - Copper

**Finish** : Electro 0 Tinned

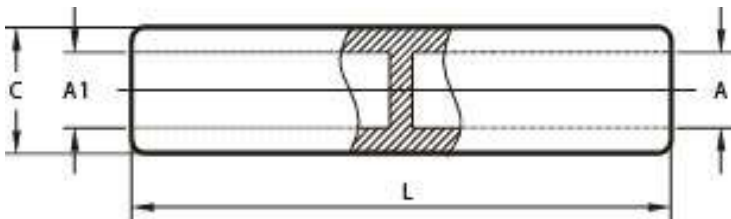


PART NO.	CABLE mm <sup>2</sup>	DIMENSIONS IN MM			PER BOX
		A	C	L	
PJB0001	1.5	1.8	3.7	6	5000
PJB0002	2.5	2.4	4	6	5000
PJB0004	4	3.1	4.8	9	2500
PJB0006	6	3.8	5.5	9	2500
PJB0010	10	4.5	6.2	10.4	1000
PJB0016	16	5.4	7.1	11.2	1000
PJB0025	25	6.8	8.8	15.5	500
PJB0035	35	8.2	10.6	13	500
PJB0050	50	9.5	12.4	15.5	300
PJB0070	70	11.2	14.7	17	200
PJB0095	95	13.5	17.4	20.5	150
PJB0120	120	15	19.4	20.5	125
PJB0150	150	16.5	21.2	23	100
PJB0185	185	18.5	23.5	29	75
PJB0240	240	21	26.5	35	50
PJB0300	300	23.5	30	39	25
PJB0400	400	28.5	36.5	45	15
PJB0500	500	30	39	50	5
PJB0630	630	35	45	58	5
PJB0800	800	39	50.6	75	2
PJB1000	1000	43	56.2	75	2



# CABLE CONNECTOR WITH SOLID BARRIER

**Material** : E - Copper  
**Finish** : Electro 0 Tinned

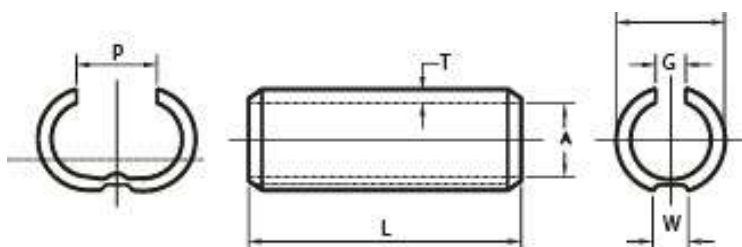


PART NO.	CABLE mm <sup>2</sup>	CABLE mm <sup>2</sup>	DIMENSIONS IN MM				PER BOX
			A	A1	C	L	
PCS3535	35	35	8.2	8.2	11	60	100
PCS3550	35	50	8.2	8.2	13	60	75
PCS5050	50	50	10	10	13	60	75
PCS5070	50	70	10	10	16	65	40
PCS7070	70	70	11.5	11.5	16	65	40
PCS7095	70	95	11.5	11.5	20	85	20
PCS9595	95	95	14	14	20	85	20
PCS9512	95	120	14	14	22	95	15
PCS1212	120	120	15.5	15.5	22	95	15
PCS1215	120	150	15.5	15.5	23.5	105	10
PCS1515	150	150	17	17	23.5	105	10
PCS1518	150	185	17	17	24	115	10
PCS1218	120	185	15.5	15.5	24	115	10
PCS1818	185	185	19	19	24	115	10
PCS1824	185	240	19	19	24	125	5
PCS2424	240	240	21.5	21.5	28	125	5
PCS1524	150	240	17	17	28	125	5
PCS2430	240	300	21.5	21.5	28	140	5
PCS1830	185	300	19	19	31.5	140	5
PCS3030	300	300	24.5	24.5	31.2	140	5
PCS3040	300	400	24.5	24.5	36.5	170	3
PCS4040	400	400	27.5	27.5	36.5	170	3

**Material** : Brass

**Finish** : Electro - Tinned

**Screw** : Stainless Steel Zinc Plated

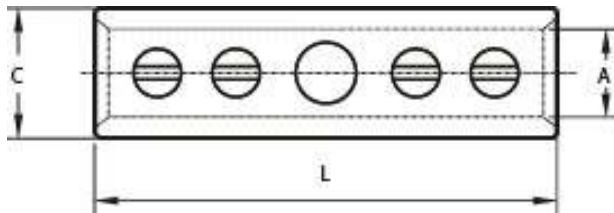


PART NO.	CABLE mm <sup>2</sup>	DIMENSIONS IN MM					PER BOX
		A	C	L	No of Screw	No of Screw	
PSC0010	10	4.4	9	30	2	M4	200
PSC0016	16	5.5	10	40	4	M4	150
PSC0025	25	6.8	11	45	4	M5	100
PSC0035	35	8.2	13	45	4	M5	75
PSC0050	50	9.5	15	48	4	M6	50
PSC0070	70	11.2	17	52	4	M6	40
PSC0095	95	13.5	20	55	4	M8	30
PSC0120	120	15	22	55	4	M8	25
PSC0150	150	16.5	25	60	4	M10	20
PSC0185	185	19	27	60	4	M10	15
PSC0240	240	21	29	65	4	M10	15
PSC0300	300	23.5	32	65	4	M10	10

## WEAK BACK FERRULES

**Material** : E - Copper

**Finish** : Electro - Tinned



PART NO.	CABLE mm <sup>2</sup>	DIMENSIONS IN MM							PER BOX
		A	C	G	L	P	P	W	
PFW0006	6	3	4.6	2	20	0.8	3	-	1000
PFW0010	10	4.4	6	2	25	0.8	4	-	1000
PFW0016	16	5.5	7.5	2	25	1	5	1.5	500
PFW0025	25	7	9	2	30	1	7	1.5	300
PFW0035	35	8	10.5	2	35	1.2	8	1.5	200
PFW0050	50	9.5	11.9	2	40	1.2	9	1.5	150
PFW0070	70	12	14.8	3	45	1.4	12	3	100
PFW0120	120	15.5	18.7	4	55	1.6	15	3	50
PFW0150	150	17	20.6	4	60	1.8	16	3.4	40
PFW0185	185	18.5	22.9	4	65	2.2	18	5	30
PFW0225	225	20.5	24.9	5	75	2.2	20	5	20
PFW0240	240	22	26.4	5	80	2.2	21	5	20
PFW0300	300	24	29.6	5	85	2.8	23	5	15
PFW0400	400	28.5	34.7	7	95	3.1	27	5	10
PFW0500	500	30.5	37.5	7	105	3.5	30	5	5
PFW0625	625	34.5	42.5	8	115	4	33	5	5



SINGLE DOOR METAL ENCLOSURES

Model No.	AIS-151580	AIS-202015	AIS-302515	AIS-303020	AIS-403020	AIS-504020	AIS-605020	AIS-806025	AIS-908025	AIS-106021
Height (mm)	150	200	300	300	400	500	600	800	900	1000
Width (mm)	150	200	250	300	300	400	500	600	800	600
Depth (mm)	80	150	150	200	200	200	200	250	250	210
Thickness (mm)	1.2	1.2	1.2	1.2	1.2	1.5	1.5	1.5	1.5	1.5
Mounting Plate	1.5	1.5	1.5	1.5	1.5	1.5	1.5	1.5	1.5	1.5

## ELECTRICAL PANELS



- Range : (W X H X D mm) : 200 X 200 X 100 upto 1600 X 1200 X 300

- Fabricated using CRCA sheet steel :

Body and Door : 1 mm thickness upto 450X 450 X 170 ,  
 1.2 mm thickness upto 600X 600 X 200 and  
 1.5 mm thickness upto 1600 mm

Mounting plate and Gland plate : 1.5 / 2 mm thickness

- Powder coated paint finish : Body : RAL 7032 fine structure finish  
 Mounting plate : Deep Orange (RAL 2000)

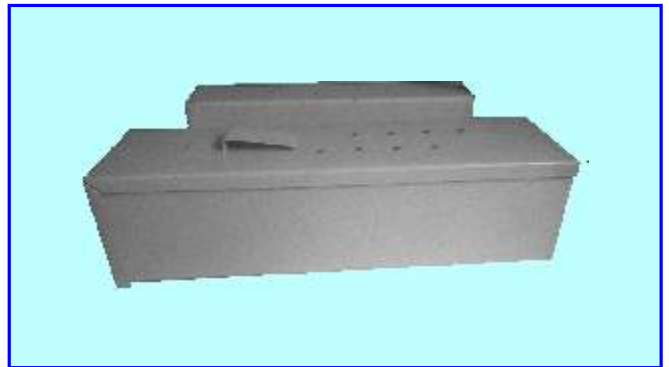
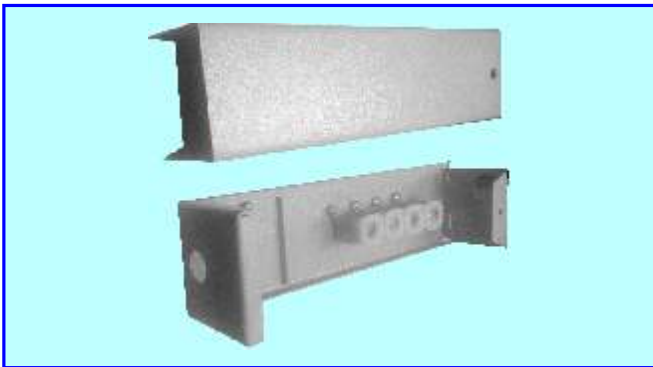
- Double gasket liner in PU / EPDM for durable ingress protection

- Gland plates with 16, 19, 25 & 32 mm size knock outs provided at bottom

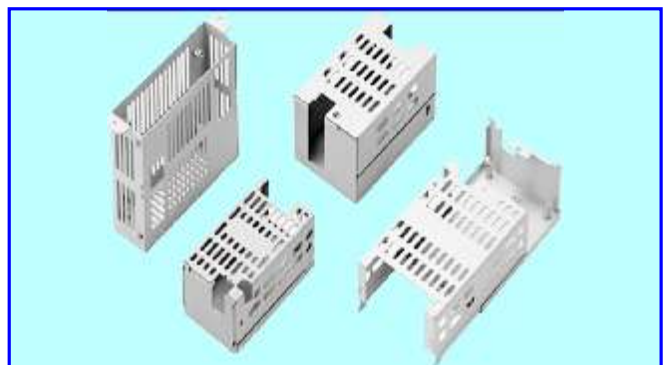
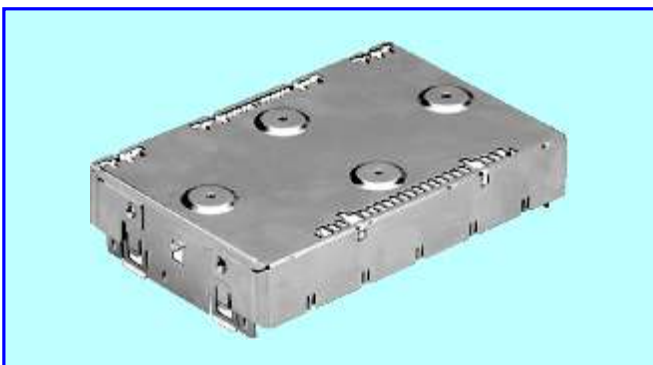
- Wall mounting brackets provided with pre-vented holes on back side

- Customised solutions : Ability to meet special requirements like non standard sizes, colours, door configuration, locking arrangement, IP 55 or 66 equivalent

## TELECOM ENCLOSURES



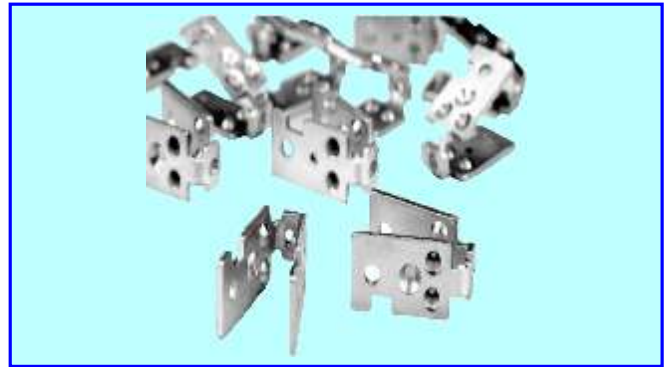
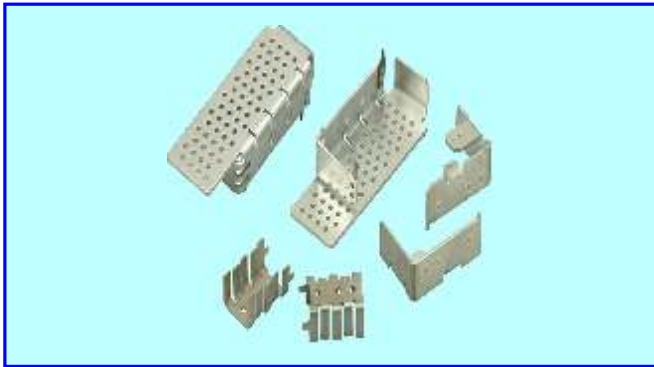
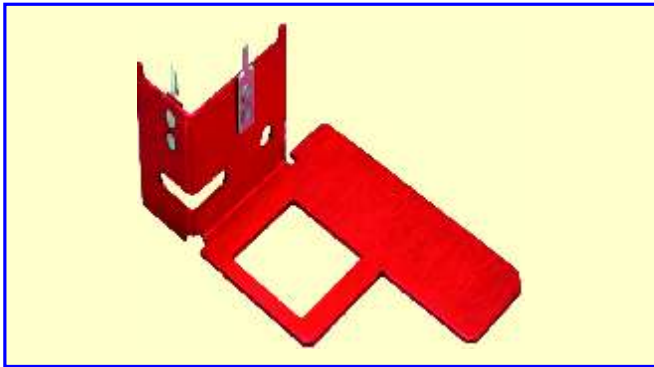
## CUSTOMIZED ENCLOSURES





## ACCESSORIES

- HEATSINKS
- CLAMPS
- DIN RAIL CLAMPS



## CUSTOMIZED COMPONENTS

- MEET SPECIAL REQUIREMENTS
- ABILITY TO MANUFACTURE CRITICAL COMPONENTS WITH 0.01 mm TOLERANCE / ACCURACY





PHOENIX IMPEX

B22-F, Malad Industrial Units CHSL,  
Ramchandra Extension Lane,  
Kanchpada, Malad (West),  
Mumbai - 400 064, INDIA.  
Phone : +91 9323424138 / +91 9819724138  
Email : sales@phoeniximpex.in